

QUESTION 5

IF POSSIBLE, WHAT IS THE BREAKDOWN OF THE NUMBER OF MUSIC STUDENTS BY GRADE (YEAR) LEVEL?

5.1 Australian Capital Territory

It is assumed for this research that music student means a students participating in:

1. student classroom music instruction and/or
2. individual or small group instruction in music performance and/or
3. participation in the Instrumental Music Program (IMP).

There is no mandated requirement for music teaching in ACT schools, and data is not centrally collected. Consequently obtaining overall data is beyond the scope of this research.

It is generally accepted that all primary schools have some form of music instruction for students in all years. Based on the Minister for Education's advice that 'most' Government high schools have compulsory music for year 7, and an assumption that Independent and Catholic high schools do also, it could be contended that all ACT school students up to and including year 7 will receive some form of music instruction in school. However, it should be noted that the Minister's statement is a claim without clear evidence to support it, and therefore needs to be treated with some caution.

Estimation of music instruction for year 8 and beyond is not possible.

Table 5.1

Primary school students receiving music instruction in ACT, 2001

	Government	Independent	Catholic	All Schools
Pre Year 1(a)	2,985	292	1,152	4,429
Year 1	3,188	321	1,190	4,699
Year 2	3,077	311	1,173	4,561
Year 3	3,028	322	1,245	4,595
Year 4	3,072	360	1,279	4,711
Year 5	3,035	344	1,378	4,757
Year 6	3,028	342	1,316	4,686
Year 7	2,536	682	1,586	4,804

In 1990 the Instrumental Music Program in Government primary schools included 18 schools and 900 students, drawn from years 5 and 6. In 2001 this had grown to 40 schools and up to 1760 students drawn from the same years.

5.2 New South Wales

The results in Table 5.2 may contradict the reality of what occurs in music education in schools and is therefore entitled *NSW students enrolled in primary classes by grade level* to reflect this situation, rather than ‘number of music students by year level’.

Table 5.2
Students in NSW primary classes by grade level, 2002

	Categories of Schools		
	Government schools	Independent schools	Catholic Schools
School Year Primary			
Year 1	65, 342	7, 149	18, 130
Year 2	65, 159	6, 808	18 039
Year 3	64, 289	7, 223	18, 008
Year 4	64, 400	7, 281	17, 137
Year 5	63, 082	7, 922	17, 631
Year 6	61, 555	8, 112	17, 580

Complete results for numbers of students in secondary music classes are available in DET schools only. Music is mandatory in years 7 and 8 in NSW secondary schools but numbers of music students in years 7 and 8 in Table 5.5 may not reflect teaching by the specialist music teacher(s) in the schools. Results for years 9 and 10 show the numbers of students in elective classes studying *Additional Music* (Board of Studies, 1994). Numbers of music students in non-government schools are not available in year 9. Numbers from years 11 similarly are available for DET schools only. Results for year 10 are reliable and accurate as figures are published by the Board of Studies (BOS) through rigorous School Certificate accreditation procedures. Similarly, results for year 12 are BOS results and are considered highly reliable and accurate. This is due to the validity of the HSC as a public examination in which results for all candidates are recorded for all courses - *Music 1* (Board of Studies, 1999a) *Music 2 and Music Extension* (Board of Studies, 1999b) .

Table 5.3
Secondary music students in NSW by year level, 2002

	Categories of Schools			Total for all school systems
	Government schools*	Independent schools**	Catholic Schools***	
Secondary				
Year 7	50, 056	7, 149	20, 604	77, 809
Year 8	42, 357	6, 808	19, 794	68,959
Year 9	7,434	n/a	n/a	
Year 10	7,365	1,974	1,495	10, 151 ♦
Year 11	3,464	n/a	n/a	
Year 12	2,685		1,779	4, 464
		(Total BOS minus DET figures)		

* Figures supplied by the DET.

- ** Figures available for year 10 SC and year 12 HSC. Years 7 and 8 figures supplied by ABS and CEC.
- *** Figures available for year 10 SC and year 12 HSC. Years 7 and 8 figures supplied by ABS and CEC.
- ◆ Year 10 figures supplied by BOS.

In NSW the School Certificate (SC) examination is conducted in year 10 with external examinations in each and all of English, Mathematics and Science KLAs and examinations in two of the following three subjects - Civics, Australian History and Australian Geography. Music is internally assessed. Music in year 10 is offered as a 100 hour or 200 hour course. Table 8 shows distributions of students in both 100 and 200 hour courses in schools from three school systems.

Table 5.4
Numbers of NSW School Certificate music students from 1995-2001

	Categories of Schools						Total all school systems
	Government		Independent		Catholic		
	200 hour course	100 hour course	200 hour course	100 hour course	200 hour course	100 hour course	Both 100 and 200 hour courses*
Year							
2001	5, 676	1, 006	1, 604	370	1, 212	283	10, 184
2000	6, 329	1, 073	1, 742	328	1, 284	261	11, 057
1999	6, 447	975	1, 678	347	1, 383	290	11, 170
1998	6, 105	1, 064	1, 743	338	1, 275	212	10, 759
1997	5, 958	1, 084	1,506	281	1, 203	183	10, 239
1996	5, 694	812	1, 497	195	1, 125	148	9, 506
1995	5, 400	643	1, 334	147	1, 022	118	8, 703

* Totals in the final column include small numbers of students in overseas schools or students who study music with an outside tutor.

5.3 Northern Territory

5.3.1 Primary Level

In the context of class/curriculum music instruction, it is not possible to provide accurate numbers of students learning music in each year level in primary schools where there is no resident music specialist. However, it would be true to say that where music education is left to generalist class teachers, the number of students receiving music education diminishes the higher up we look. Thus, amongst primary students in NT schools without music specialists, (government or non-government systems), it would be fairly true to say, if the division of students between years 1-7 is approximately even, that:

70 % of year 1 students receive some sort of class music approximately 1790 students

65 % of year 2 students receive some sort of class music students	approximately 1660
50 % of year 3 students receive some sort of class music students	approximately 1280
30 % of year 4 students receive some sort of class music students	approximately 772
18 % of year 5 students receive some sort of class music students	approximately 465
8 % of year 6 students receive some sort of class music students	approximately 210
4 % of year 7 students receive some sort of class music students	approximately 105

In the context of class/curriculum music instruction in schools with music specialists, if the division of students between years 1-7 is approximately even, then the number of students at each level receiving some class music instruction: i.e. between 910 and 930 students

Choral and instrumental instruction happens in schools with or without a specialist (but mostly with) and has a different distribution across levels:

Students in years 1–3 have no instrumental instruction additional to class music.
 Students in year 4 might have recorder instruction and/or sing in a choir.
 Students in year 5 can commence instrumental instruction and sing in a choir. Approx numbers: 780 students
 Students in year 6 receiving instrumental instruction and/or sing in a choir. Approx numbers: 715 students
 Students in year 7 receiving instrumental instruction and/or sing in a choir. Approx numbers: 645 students

5.3.2 High School Levels

At high school, it is not customary for any students to receive music instruction unless they are taking class music electives from years 8 to 10 and advancing to Stage 1 and 2 Music, or VET courses, or receiving instrumental/choral instruction.

After combining these two categories, an approximate breakdown by level would be:

Year 8	approximately 720 students
Year 9	approximately 490 students
Year 10	approximately 165 students
Year 11	approximately 140 students
Year 12	approximately 116 students

5.4 Queensland

The following two tables indicated the breakdown of the number of music students by grade/year in Queensland government schools from Years P to 12 in 2001 and from Years 8 to 12 in 2002.

Table 5.5
Students in year levels in Queensland government schools 2001

Level	Classroom Music Students	Instrumental Music Students	Total Students	Percentage of students studying music
Primary				
Year 1	53 732	n/a	53 732	100
Year 2	52 903	n/a	52 903	100
Year 3	52 905	n/a	52 905	100
Year 4	53 298	n/a	53 298	100
Year 5	52 628	n/a	52 628	100
Year 6	52 708	n/a	52 708	100
Year 7	51 576	n/a	51 576	100
Secondary				
Year 8	n/a	n/a	51 311	
Year 9	n/a	n/a	50 338	
Year 10	n/a	n/a	50 261	
Year 11	* 1 973	* 17	45 320	4.4
Year 12	* 1 852	* 388	39 468	4.7

Source: Schools Australia 2001 – ABS, * QSA

Table 5.6
Students receiving musical instruction in secondary year levels in Queensland Secondary Schools, 2002

Year	Males	Females	Totals
8	5180	5141	10321
9	1475	1563	3038
10	1585	1632	3217
11	777	927	1704
12	749	955	1704
CJ	27	25	52
SU	8308	8402	16710
Totals	18101	18645	36746

Source: Education Qld

CJ = 'Combined Junior' - Normally Years 9 and 10

SU = 'Secondary Ungraded' and may represent any combination of classes among Years 8, 9 and/or 10.

5.5 South Australia

Although questions 4 to 7 were, for ease of reporting, answered collectively in the South Australian State Report, the question responses have been separated as much as possible in the National Report. Nevertheless there will be some degree of replication in responses for these questions.

5.5.1 Classroom Music

Partly because of the difficulties in attributing meaning to the data, music enrolment data for primary school was terminated in 1997 and for secondary schools was discontinued after 1999. Also in the mid- 1990's, the gathering of statistical data by DETE was questioned because the data was not being utilised (Brian Gill 2002).

Table 5.7

Subject Enrolment Data by Year Level in South Australian Schools, 1994-1996

Year	1994				1995				1996					
	ME	T&P	MU	Total	ME	H&L	T&P	MU	Total	ME	H&L	T&P	MU	Total
Rec.	22	2	4533	4557	59			3487	3546	30			4013	4043
01	17	2	5258	5277	83			4501	4584	33			3920	3953
02	31	11	5440	5482	120			4291	4411	49		3	3974	4026
03	18	3	5330	5351	4			4034	4038	25		6	3751	3782
04	19	7	4949	4975	5			4017	4022	63		14	3799	3876
05	26	12	5044	5082	5			3791	3796	64		2	3713	3779
06	20	11	4442	4473	16			3671	3687	43		2	3445	3490
07	20	15	4406	4441	12			3374	3386	62		8	3388	3458
PC	5		122	127	5			190	195	13			169	182
08	431	137	5103	5671	49		160	5284	5493	48		8	5550	5605
09	71	96	2494	2661	20		22	2854	2896	37		31	2433	2501
10	10	71	1427	1508	18		10	1379	1435	28		15	1382	1425
11	13		646	659	20	30	98	642	790	1		13	657	671
12	102			102		47	104	295	446		23	91	342	456
SC	4		30	34	8			41	49	11			6	17
SR			25											
Total	809	367	4926		424	77	394	41896		507	23	193	40542	

Table 5.8

Subject Enrolment Data by Year Level in South Australian Schools, 1997-1999

Year	1997					1998					1999				
	ME	H&	T&P	MU	Total	ME	H&L	T&P	MU	Total	ME	H&L	T&P	MU	Total
08	50		21	5332	5403	66	56	50	4404	4510	65			4883	4948
09	102		42	2771	2915	76	44	49	2685	2778	72			2769	2841
10	32		12	1630	1674	23	7	11	1561	1579	44			1638	1682
11			13	798	811		8	21	780	809	13		42	788	843
12		6	34	388	428		19	65	368	452	5	10	17	392	424
SC														13	
SR				1					7					1	
Total	184	6	122	10,920		165	134	196	9805		208	10	59	10484	

PC= ungraded primary
 SC= ungraded secondary
 SR= adult re-entry student
 Rec= Reception

ME= Music Enrichment
 H&L= Music History and Literature
 T&P= Music Theory and Practice
 MU= Music
 TOT= Total

Even given the unreliability of the data, one observation is the larger number of students that take up music at year 8 or first year secondary school, compared to the numbers given at primary school levels and the drop off rate at year 9, which is consistent with anecdotal evidence that music is generally compulsory at year 8 and becomes elective after that. Also, trained music specialists are available generally to students at secondary schools beginning at year 8 level.

5.5.2 Instrumental Music and Ensembles

The following table indicates the break down of students receiving instrumental instruction according to year level in South Australian government schools.

Table 5.9
Instrumental Music Teaching in South Australian Government Schools, 1984, 1990 and 2002

Year level	Term 3, 1984	Term 3, 1990	2002
Reception	27		10
01	13	17	44
02	11	59	81
03	47	184	232
04	413	632	602
04	592	926	983
06	719	841	1190
07	656	687	1046
08	1476	1423	1470
09	1754	1626	1479
10	1108	937	922
11	617	451	582
12	254	200	298
13+ or unreported	86	217	91
TOTAL	7776	8200	9030

5.6 Tasmania

The numbers of students in all grades/years, which does not necessarily indicate the numbers of students receiving music instruction, are only available for the Catholic and government education sectors and are set out in Table 5.10 below.

Table 5.10
Numbers of students by grade level – Tasmanian Primary Schools, 2002

School Year	Government	Independent	Catholic
Prep	5198	Not Available	885
Grade 1	5354	Not Available	957
Grade 2	5203	Not Available	955
Grade 3	5320	Not Available	964
Grade 4	5199	Not Available	988
Grade 5	5184	Not Available	990
Grade 6	5050	Not Available	1095
TOTAL Primary	36508	3482	6834

As noted previously, most primary school students are believed to receive music instruction therefore, the table above would indicate a good approximation of the numbers of music students at each grade level for primary years. Also as indicated in Question 3, there was an increase in the numbers of students receiving music instruction over the last ten years because of the introduction of the National Curriculum and the changes to teaching award conditions in relation to the number of contact hours.

Table 5.11
Numbers of students by grade level – Tasmanian Secondary Schools, 2002

School Year	Government	Independent	Catholic
Grade 7	4761	Not Available	1173
Grade 8	4439	Not Available	1162
Grade 9	3975	Not Available	1006
Grade 10	4886	Not Available	1028
Grade 11	5217	Not Available	922
Grade 12	5411	Not Available	800
Total Secondary	28689	4472	6091

Also as noted previously, it is believed that most grade 7 students receive music instruction and many grade 8 students continue with a common course in music. The decision about optional courses in Grade 8 is a school based one and therefore an accurate picture cannot be gained without surveying each individual school. This situation has remained the same over the last twenty years. At grade 9 level students are usually given a choice of subjects and information about numbers of students at this level is not available.

The numbers of students receiving music instruction at years 10 to 12 would best be estimated by considering the figures of the numbers of students receiving an award from TASSAB as set out in Table 6.9. Some students may also be studying music courses under another award e.g. International Baccalaureate.

5.7 Victoria

In *The Arts: Curriculum and Standards Framework II*, Music is 'subsumed within the Performing Arts strand along the Drama and Dance for Level 1 to 3 in primary schools'. Indeed, under CSFII, primary schools may now choose not to include Music in their teaching of the Performing Arts Strand at all. Furthermore, when students reach Level 4 at their primary school and then Levels 5 and 6 at secondary school, there may similarly be a decision not to include Music as one of the minimum of two Arts strands that students should engage in at each level. 'Thus, under the new CSF (CSFII) there is the potential that the role and place of music in some schools could be seriously eroded' (Stevens, 2000).

In a survey of Victorian government secondary schools in 1995, Lierse (1999b) was able to quantify the percentages of schools providing class music programs for years 7 to 12 across the various regions. The following extracts from her thesis summarise the situation for Years 7-8 and 9-10.

Years 7-8

At junior secondary level (Years 7 and 8), overall, the evidence of a sequential program enabling students to develop the knowledge and skills necessary to take this subject through to senior levels is missing. Only 15 per cent of the sample of 237 schools offered music as a core requirement in Year 7 for the entire school year, and this decreased to 13 in Year 8. In 17 per cent of schools no music is offered in Year 7. In 5 per cent of schools it is offered as an elective subject. A further 33 per cent of schools are known to be offering students only one term of music as core, and are giving students the option of taking classroom music as an elective subject in higher forms. Most notable is the absence of a classroom music program in approximately 28 per cent of country schools in Year 7, and this number rises to 41 per cent in Year 8... there are significant changes to the provision of classroom music at Year 8 level. Most notable is the percentage of schools with no Year 8 music classes and this number rises to between 40 per cent and 50 per cent in three of the country regions. Also notable is the increase in the numbers of schools in the metropolitan area who offer an elective music unit in Year 8. The most popular selection is to offer music for one semester. (Lierse 1999b, p.112)

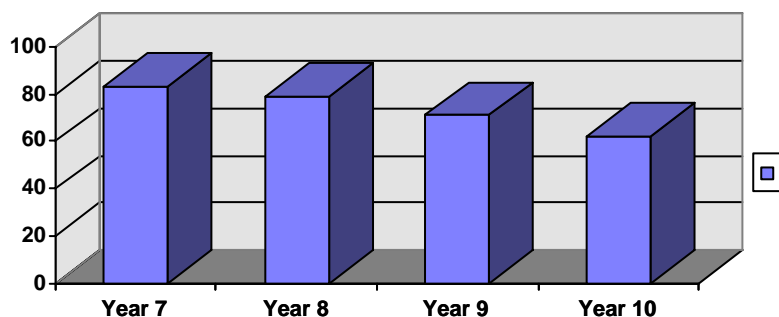
Years 9-10

...regional differences in the provision of classroom music in Years 9 and 10 are most striking, particularly between the metropolitan regions and the country regions. The percentage of schools in the country without a music program in Years 9 and 10 increases from 49 per cent in Year nine, to 75 per cent in one of the country regions in Year 10. In the metropolitan area the numbers rise from 17 per cent to 29 per cent in the South East, and from 21 per cent to 25 per cent in the North West metropolitan region. Most schools in all regions choose to offer Year 9 students a semester unit of music as an elective subject. Music as a core subject was maintained in 21 per cent of schools in the South East metropolitan region.... In Year 10, again the most popular allocation of class time was a semester unit (47%), with an additional 11 per cent of schools offering an elective for the full year. Only one region offered a term elective and this particular region had the greatest number of

schools without a Year 10 program (70%). Again the country was shown to have a significantly high proportion of schools without a Year 10 music program, with the exception of Gippsland region. A small number of schools in the Metropolitan regions maintained a core component which, in the majority of cases, consisted of a period a week of massed class singing. (Lierse 1999b, p.113)

The average percentage of secondary schools across all of the seven regions in the Victorian government school system where classroom music is taught has been presented as a graph by Lierse (1999b). Predictably, there is a decline in the percentage as the year level increases.

Figure 1
Percentage of secondary schools offering classroom music in Victorian Government Schools, 1995



5.8 Western Australia

In Western Australia in years other than 11 and 12, there is no mandatory curriculum allocation for music and there is a wide range of delivery models. The system is decentralized and consequently school principals make individual school decisions about the provision of the music curriculum. Students in primary schools and lower secondary schools need only study one of The Arts (music, dance, visual arts, drama, media). Therefore, there is no requirement for schools to report on this to a central office.

Data is however kept by the Department of Education's School of Instrumental Music on the numbers of students receiving instrumental lessons in government schools.

The table below provides data indicating the breakdown of instruments taught in government schools by year level in 2001 to students in Years 3 to 12.

Table 5.12

Numbers of students taking instrumental lessons administered through the Department of Education's School of Instrumental Music, 2001

Year	3	4	5	6	7	8	9	10	11	12
Brass	These instruments begin in Year 6 and in Year 8.			844	584	411 (169)	238	174	111	65
Clarinet				870	623	383 (71)	225	164	71	45
Flute				595	440	308 (52)	179	135	52	34
Guitar				488	393	200 (37)	99	99	42	27
Percussion				49	40	165 (146)	108	86	35	20
Violin	170	145	139	115	122	52	29	19	14	12
Viola	-	-	135	131	77	33	28	18	7	4
Cello	-	112	96	78	65	34	21	12	11	4
D/Bass	-	-	-	33	26	23 (9)	13	11	9	3
Piano	-	21	18	19	9	No classes beyond Year 7				
Oboe	These instruments begin in Year 8 only					20	11	9	6	4
Bassoon						14	9	6	9	5
Saxophone						104	91	65	35	23
Voice						100	62	57	38	18

No data is available for non-government schools.

5.9 Summary of State Findings and Indication of State and/or National Trends

5.9.1 State Findings

New South Wales

Due to the lack of more comprehensive statistics, the only state where there were at least some statistical data available over a reasonable spread of years was in New South Wales. In this case, the number of students taking the Music 100 and Music 200 courses for the NSW School Certificate at some time from Year 7 to Year 10 may be compared with the total enrolment of students in the respective government, Independent and Catholic school systems at the Year 10 level. Although this comparison is made within a particular year level (Year 10) rather than across the Years 7 to 10 levels, it is best considered here than in the next research question (Question 6) which focuses on the end-of-secondary-school ('graduation') examination enrolments in Music.

Table 5.13 below has been adapted from Table 5.6 and shows the total number of enrolments for the School Certificate Music 100 and Music 200 subjects in those

years for which total year 10 student enrolments are available in New South Wales. (Although students in Years 7 to 9 may well have taken Music subjects for the School Certificate, the number of students in Year 10 has been taken as the reference point for this comparison of annual completion numbers.

Table 5.13

Number of Students taking the School Certificate Music Subjects in New South Wales Schools, 1995, 1998 and 2001

	Total for all school systems	Total for all school systems	%age of students taking Music
Year	Both Music 100 and 200 hour courses	Year 10 enrolment	for the NSW School Certificate
2001	10, 184	53821	18.92
1998	10, 759	54661	19.68
1995	8, 703	51731	16.82

The percentages indicated in the table above show a fluctuation in the proportion of students taking Year 10 School Certificate subjects over the seven year period but, when the 1995 and 2001 percentages are compared, it is possible to say that the number of students taking the School Certificate music subjects has increased.

5.9.2 Indications of State and/or National Trends

As indicated immediately above, the amount of longitudinal data available from which to gain some indication of state and/or national trends in relation to this question is so limited as to be impossible to draw any conclusions from.