

1.2 Census statistics

General note: The occupational classification in the five-yearly Census only identifies the main job, defined as what was the main occupation during the week preceding the date of the Census in early August.

Contents

Table 1.2.1.1: Growth in number of musicians, Australia, 1961-2001

Table 1.2.1.2: Growth rates, musicians, arts professionals and total workforce, 1971-2001

Table 1.2.1.3: Sex, age and ethnic origin of musicians, Australia 2001

Table 1.2.1.4: Gross weekly income compared with other arts professions, 2001

Table 1.2.1.5: Median, average and total annual incomes, arts professions, 2001

Table 1.2.1.6: Income trends for arts professions, 1986-2001

Table 1.2.1.7: Income distribution changes, musicians and related workers, 1986-2001

Table 1.2.1.8: Hours worked during week before Census, 2001

Table 1.2.1.9: Musicians' working hours compared, 1996 and 2001

Table 1.2.1.10: Number of musicians and other arts professionals, States and Territories, 2001

Table 1.2.1.11: Geographic distributions of musicians and other arts professionals, 2001

Table 1.2.1.12: Cultural occupations and cultural industries, 2001 Census

Table 1.2.1.13: Ranking of main cultural occupations by number of people employed, 2001

Chart 1.2.1.1: Growth in number of musicians

Chart 1.2.1.2: Annual growth rates

Chart 1.2.1.3: Incomes of arts professionals, 2001

Chart 1.2.1.4: Total incomes of arts professionals, 2001

Chart 1.2.1.5: Estimated change in income of arts professionals, 1986-2001 (constant prices)

Chart 1.2.1.6: Cumulative income distributions for musicians

Chart 1.2.1.7: Income versus full-time work, 2001

Chart 1.2.1.8: Geographic distributions, 2001

Table 1.2.1.1: Growth in number of musicians, Australia, 1961-2001

Census	Musicians and related workers	Private music teachers	Total persons	Musicians and related workers	Private music teachers	Total persons
Persons (main occupation only)			Average annual change			
1961	NA	NA	3,671	NA	NA	NA
1966	NA	NA	4,986	NA	NA	6.3%
1971	NA	NA	5,934	NA	NA	3.5%
1976	NA	NA	6,765	NA	NA	2.7%
1981	4,800	3,725	8,525	NA	NA	4.7%
1986	6,080	4,545	10,625	4.8%	4.1%	4.5%
1991	6,988	5,454	12,442	2.8%	3.7%	3.2%
1996	7,617	7,113	14,730	1.7%	5.5%	3.4%
2001	9,007	8,441	17,448	3.4%	3.5%	3.4%
20-year trend 1981-2001				3.0%	4.3%	3.6%
40-year trend 1961-2001				NA	NA	3.9%

Notes:

(1) Up to and including the 1981 Census, musicians and private music teachers were counted as one group. As part of his research for *Arthurst!* for the Australia Council (1992), Hans Hoegh-Guldberg estimated the split between the two groups. The observations for 1961-81 were originally extracted by the same author for the Australia Council publication, *The Australian Music Industry* (1987). This publication also contained the estimates, based on a State-by-State analysis (p 42).

(2) The total number of artists and related workers increased from 42,500 in 1981 (adjusted for classification changes involving private music teachers and potters), to 51,900 in 1986, 62,500 in 1991, 80,000 in 1996 and 97,975 in 2001 (annual growth trend 4.3%). So while the number of musicians and related workers just doubled, the total number of artists and related workers increased by 130% over these twenty years. The number of musicians relative to total artists peaked at 11.7% in 1986 but has since fallen to 9.2%.

(3) Comparative annual trends 1986-2001 (1986, 1991 and 1996 from Hans Hoegh-Guldberg, *The Arts Economy 1968-1998* (Australia Council 2000), 2001 from ABS, *Employment in Culture 2001*): Designers and illustrators 6.1% pa from 13,400 to 32,185, actors and dancers 5.4% pa from 2,800 to 6,147, journalists and related workers 3.8% pa from 9,900 to 16,517, visual artists 3.5% pa from 5,900 to 9,779, and musicians and related workers 2.6% pa (over this period) from 6,080 to 9,007.

Source: Australian Bureau of Statistics, Census publications

Table 1.2.1.2: Musicians, total arts professionals and total workforce, 1971-2001

Census	Musicians and related professions	Average annual growth	Persons in arts professions	Average annual growth	Proportion of total workforce	Total employed workforce	Average annual growth
1971	NA	NA	26,400		0.50%	5,240,000	
1976	NA	NA	29,400	2.2%	0.51%	5,788,100	2.0%
1981	4,800	NA	40,300	6.5%	0.64%	6,292,700	1.7%
1986	6,080	4.8%	51,900	5.2%	0.80%	6,520,500	0.7%
1991	6,988	2.8%	62,500	3.8%	0.88%	7,109,300	1.7%
1996	7,617	1.7%	80,000	5.1%	1.07%	7,509,400	1.1%
2001	9,007	3.4%	97,975	4.1%	1.18%	8,298,600	2.0%

Source: Australian Bureau of Statistics. From research carried out for the Australia Council (*The Arts Economy 1968-98*), published in 2000. 2001 figures and all statistics on musicians added

Table 1.2.1.3: Sex, age and ethnic origin of musicians, Australia 2001

	Music director	Singer	Instrumental musician	Composer	Not specified	Total
Total persons	399	1,339	6,625	332	311	9,006
Males	237	623	5,070	277	189	6,396
Females	162	716	1,555	55	122	2,610
Males	59%	47%	77%	83%	61%	71%
Age groups*						
15-19	8	60	239	5	17	329
20-24	29	141	769	16	43	998
25-29	56	196	1,083	48	54	1,437
30-34	41	234	1,028	42	44	1,389
35-39	53	196	863	52	39	1,203
40-44	71	180	819	67	38	1,175
45-49	45	116	630	49	27	867
50-54	44	110	469	27	27	677
55+	52	106	725	26	22	931
Median age (years)	40.9	36.0	36.1	40.3	34.8	36.5
Proportion under 40	47%	62%	60%	49%	63%	59%
Origin**						
Indigenous	4	12	44	-	-	60
Other Australian-born	300	947	4,962	241	241	6,691
Born other English-speaking country	62	235	950	51	42	1,340
Born other countries	28	124	563	30	23	768
Indigenous	1.0%	0.9%	0.7%	0.0%	0.0%	0.7%
Other Australian-born	76.1%	71.9%	76.1%	74.8%	78.8%	75.5%
Born other English-speaking country	15.7%	17.8%	14.6%	15.8%	13.7%	15.1%
Born other countries	7.1%	9.4%	8.6%	9.3%	7.5%	8.7%

* Composers estimated for 15-19 and 20-24 year groups.

** Excluding origin not stated

Source: Australian Bureau of Statistics, *Employment in Culture 2001* (Cat 6273.0).

Table 1.2.1.4: Gross weekly income compared with other arts professions, 2001

	Number of persons	Proportion				Total	Median income*
		<\$200	\$200-\$699	\$700-\$999	\$1,000+		
Private music teachers	8,445	26.1%	59.4%	10.2%	4.2%	100%	\$ 348
Music directors	399	11.2%	34.4%	17.3%	37.0%	100%	\$ 777
Composers	332	11.7%	45.8%	17.5%	25.0%	100%	\$ 598
Singers	1,339	18.1%	57.5%	15.3%	9.1%	100%	\$ 438
Instrumental musicians	6,625	18.8%	55.2%	16.9%	9.2%	100%	\$ 430
Not specified**	312	16.1%	59.3%	17.0%	7.5%	100%	\$ 448
Total musicians and related professions	9,007	18.0%	54.4%	16.7%	10.9%	100%	\$ 444
Journalists and related professions	16,516	4.2%	32.1%	25.6%	38.2%	100%	\$ 862
Film, TV, radio and stage directors	6,853	5.2%	32.7%	24.7%	37.4%	100%	\$ 846
Designers and illustrators	32,195	7.8%	46.6%	27.1%	18.6%	100%	\$ 665
Authors and related professions	4,078	13.7%	42.6%	21.3%	22.5%	100%	\$ 629
Media presenters	2,579	14.0%	48.1%	14.8%	23.2%	100%	\$ 573
Photographers	6,845	11.1%	56.1%	20.1%	12.7%	100%	\$ 548
Actors, dancers and related professions	6,146	17.8%	55.6%	13.4%	13.2%	100%	\$ 476
Musicians and related professions	9,007	18.0%	54.4%	16.7%	10.9%	100%	\$ 444
Visual arts and craft professions	9,780	27.0%	57.4%	9.2%	6.4%	100%	\$ 352
Artistic profession not further defined	3,991	16.6%	50.3%	18.5%	14.6%	100%	\$ 498
Total artistic professions	97,990	11.5%	46.2%	21.7%	20.7%	100%	\$ 624
Compare:							
All cultural occupations	259,910	10.3%	49.9%	22.0%	17.9%	100%	\$ 608
Total labour force	8,298,606	10.3%	51.2%	19.9%	18.6%	100%	\$ 597

* The median income is calculated from a finer income classification (seven classes) than shown in the above table.

** Occupation not elsewhere classified or not further defined

Source: ABS, *Employment in Culture 2001* (total labour force from *Working Population Profile 2001* (total Australia, Cat 2006.0)).

Table 1.2.1.5: Median, average and total annual incomes, arts professionals, 2001

	Median income	Average income	Average/median ratio	Total number of persons	Total income \$million
Private music teachers	\$ 18,094	\$ 22,239	1.23	8,445	188
Music directors	\$ 40,415	\$ 48,795	1.21	399	19
Composers	\$ 31,092	\$ 40,350	1.30	332	13
Singers	\$ 22,784	\$ 28,567	1.25	1,339	38
Instrumental musicians	\$ 22,369	\$ 28,533	1.28	6,625	189
Not specified**	\$ 23,270	\$ 28,252	1.21	312	9
Total musicians and related professions	\$ 23,080	\$ 29,871	1.29	9,007	269
Journalists and related professions	\$ 44,807	\$ 53,325	1.19	16,516	881
Film, TV, radio and stage directors	\$ 44,012	\$ 52,298	1.19	6,853	358
Designers and illustrators	\$ 34,587	\$ 40,530	1.17	32,195	1,305
Authors and related professions	\$ 32,702	\$ 39,889	1.22	4,078	163
Media presenters	\$ 29,813	\$ 38,908	1.31	2,579	100
Photographers	\$ 28,481	\$ 33,939	1.19	6,845	232
Actors, dancers and related professions	\$ 24,741	\$ 31,318	1.27	6,146	192
Musicians and related professions	\$ 23,080	\$ 29,871	1.29	9,007	269
Visual arts and craft professions	\$ 18,325	\$ 23,503	1.28	9,780	230
Artistic profession not further defined	\$ 25,891	\$ 33,234	1.28	3,991	133
Total artistic professions	\$ 32,452	\$ 39,457	1.22	97,990	3,866
Compare:					
All cultural occupations	\$ 31,631	\$ 38,009	1.20	259,910	9,879
Total labour force	\$ 31,069	\$ 38,069	1.23	8,298,606	315,919

* For the cultural occupations, medians and averages are calculated from a finer income classification (seven classes) than shown in Table 1.2.4. Averages are crudely estimated using mid-points for each defined class (for example \$160 per week for the \$120-\$199 class, or \$8,320 on an annual basis).

For the open class 'under \$120 per week' we used the detailed classification for the total employed labour force (*Working Population profile 2001* (Cat 2006.0) for total Australia). Under \$120 was divided into nil/negative (16% of total), \$0-\$39 (17%), \$40-\$79 (30%), and \$80-\$119 (37%). Using the midpoint for the three defined classes and minus \$20 for nil/negative yields a weighted average of \$55. Using nil for nil/negative yields \$58. We have assumed \$55 for the calculation of average and total income.

For the top open class \$1,000 and over, 65% of observations were between \$1,000 and \$1,499 per week and 35% \$1,500 and over. It is reasonable to assume a long 'tail' on the distribution, so we assumed an average of \$2,500 per week for the open class, that is, \$130,000 on an annual basis. The resulting annual weighted average is \$85,750.

** Occupation not elsewhere classified or not further defined

Source: ABS, *Employment in Culture 2001* (total labour force from *Working Population Profile 2001* (total Australia, Cat 2006.0))

Table 1.2.1.6: Income trends for arts professions 1986-2001

	1986	1991	1996	2001
Median annual income (at 2006 values)				
Journalists and related professions	\$ 46,800	\$ 45,600	\$ 47,900	\$ 52,000
Film, TV, radio and stage directors	\$ 47,400	\$ 46,700	\$ 46,800	\$ 51,100
Designers and illustrators	\$ 35,900	\$ 37,100	\$ 37,600	\$ 40,100
Authors and related professions	\$ 38,300	\$ 37,400	\$ 36,500	\$ 37,900
Media presenters	\$ 37,700	\$ 36,500	\$ 37,400	\$ 34,600
Photographers	\$ 34,700	\$ 32,000	\$ 30,700	\$ 32,900
Actors, dancers and related professions	\$ 26,700	\$ 26,100	\$ 26,100	\$ 28,400
Musicians and related professions	\$ 29,100	\$ 27,700	\$ 27,100	\$ 26,800
Visual artists except potters	\$ 21,900	\$ 23,700	\$ 19,600	\$ 22,000
Potters and ceramic artists	\$ 19,900	\$ 17,100	\$ 17,000	\$ 17,600
Arts professions undefined	\$ 30,100	\$ 32,700	\$ 31,300	\$ 30,000
Total arts professions	\$ 35,300	\$ 34,900	\$ 34,900	\$ 37,700
Annual change since previous Census				
Journalists and related professions		-0.5%	1.0%	1.7%
Film, TV, radio and stage directors		-0.3%	0.0%	1.8%
Designers and illustrators		0.7%	0.3%	1.3%
Authors and related professions		-0.5%	-0.5%	0.8%
Media presenters		-0.6%	0.5%	-1.5%
Photographers		-1.6%	-0.8%	1.4%
Actors, dancers and related professions		-0.5%	0.0%	1.7%
Musicians and related professions		-1.0%	-0.4%	-0.2%
Visual artists except potters		1.6%	-3.7%	2.3%
Potters and ceramic artists		-3.0%	-0.1%	0.7%
Arts professions undefined		1.7%	-1.3%	-3.3%
Total arts professions		-0.2%	0.0%	1.6%

Source: ABS Census. 1986-1996 originally analysed in Hans Hoegh-Guldberg, *The Arts Economy 1968-1998* (Australia Council 2000). Constant values based on September Quarter 2006 Consumer Price Index. All estimates thoroughly rechecked in November 2006 from original Census tables, and annual changes recalculated using updated basis.

Table 1.2.1.7: Income distribution changes, musicians and related workers, 1986-2001

1986 Census

Upper limit of range	\$ 4,000	\$ 12,000	\$ 18,000	\$ 22,000	\$ 26,000	\$ 32,000	Above	Total
At 2006 values*	\$ 8,026	\$ 24,077	\$ 36,116	\$ 44,142	\$ 52,168	\$ 64,206		stated
Number	510	1,987	1,300	907	645	459	272	6,080
Distribution	8.4%	32.7%	21.4%	14.9%	10.6%	7.5%	4.5%	100.0%

1991 Census

Upper limit of range	\$ 5,000	\$ 8,000	\$ 12,000	\$ 20,000	\$ 30,000	\$ 40,000	Above***	Total
At 2006 values*	\$ 7,303	\$ 11,685	\$ 17,527	\$ 29,212	\$ 43,818	\$ 58,424		stated
Number	553	660	842	1,655	1,709	977	592	6,988
Distribution	7.9%	9.4%	12.0%	23.7%	24.5%	14.0%	8.5%	100.0%

1996 Census

Upper limit of range*	\$ 6,240	\$ 10,400	\$ 15,600	\$ 26,000	\$ 36,400	\$ 52,000	Above	Total
At 2006 values*	\$ 8,090	\$ 13,483	\$ 20,224	\$ 33,707	\$ 47,190	\$ 67,414		stated
Number	648	986	1,134	1,903	1,339	1,015	463	7,488
Distribution	8.7%	13.2%	15.1%	25.4%	17.9%	13.6%	6.2%	100.0%

2001 Census

Upper limit of range*	\$ 6,240	\$ 10,400	\$ 15,600	\$ 26,000	\$ 36,400	\$ 52,000	Above	Total
At 2006 values*	\$ 7,240	\$ 12,066	\$ 18,099	\$ 30,165	\$ 42,232	\$ 60,331		stated
Number	672	917	1,235	2,221	1,356	1,474	967	8,842
Distribution	7.6%	10.4%	14.0%	25.1%	15.3%	16.7%	10.9%	100.0%

* Consumer price index used to inflate to 2006 values:

September Quarter	Consumer price index	At 2006 prices	Multiplier used
1986	77.6	49.8	2.01
1991	106.6	68.5	1.46
1996	120.1	77.1	1.30
2001	134.2	86.2	1.16
2006	155.7	100.0	1.00

** Change from 1996 to income per week.

*** The 1991 Census had an additional class of \$40,001-\$50,000 (322 observations, leaving 270 in over \$50,000).

Source: ABS Census publications and Consumer Price Index time series to September Quarter 2006.

Table 1.2.1.8: Hours worked during week before Census, 2001

	None*	1-15	16-24	25-34	35+**	Persons
Private music teachers	2.0%	48.3%	17.0%	14.1%	18.6%	8,445
Composers	4.0%	8.3%	8.9%	13.5%	65.3%	332
Music directors	2.0%	17.4%	7.8%	8.6%	64.1%	399
Instrumental musicians	4.0%	36.1%	17.2%	14.8%	27.9%	6,625
Singers	3.8%	43.6%	17.1%	13.1%	22.5%	1,339
Not specified	2.0%	24.6%	14.8%	13.4%	45.2%	312
Total musicians and related professions	3.8%	35.0%	16.4%	14.2%	30.7%	9,007
Film, TV, radio and stage directors	4.0%	5.9%	5.8%	7.6%	76.6%	6,856
Designers and illustrators	3.2%	7.6%	7.1%	8.5%	73.6%	32,195
Journalists and related professions	4.7%	8.0%	7.5%	8.1%	71.8%	16,516
Photographers	4.3%	12.7%	9.1%	10.3%	63.6%	6,845
Authors and related professions	3.4%	13.1%	10.9%	14.5%	58.1%	4,079
Visual arts and craft professions	3.9%	14.6%	13.9%	14.3%	53.3%	9,780
Media presenters	3.6%	29.5%	12.1%	11.6%	43.3%	2,580
Actors, dancers and related professions	5.5%	29.5%	13.2%	12.9%	39.0%	6,143
Musicians and related professions	3.8%	35.0%	16.4%	14.2%	30.7%	9,007
Artistic profession not further defined	4.2%	13.4%	10.6%	12.6%	59.1%	3,991
Total artistic professions	3.9%	13.5%	9.5%	10.4%	62.7%	97,992
All cultural occupations	3.7%	13.0%	9.2%	9.4%	64.7%	259,912

* On holidays, sick leave, strike, or temporarily stood down.

** Defined as full-time work

Source: ABS, *Employment in Culture 2001*.

Table 1.2.1.9: Musicians' weekly working hours compared, 1996 and 2001

	None*	1-15	16-24	25-34	35+**	Persons
1996 Census						
Private music teachers	1.2%	50.9%	17.6%	12.6%	17.7%	7,113
Composers	3.1%	11.3%	7.8%	9.3%	68.5%	261
Music directors	0.0%	18.3%	8.3%	8.3%	65.2%	344
Instrumental musicians	3.0%	37.1%	17.9%	15.9%	26.1%	5,533
Singers	3.0%	40.8%	16.6%	15.0%	24.6%	1,244
Not specified	2.6%	30.7%	18.0%	12.7%	36.0%	233
Total musicians and related professions	2.9%	35.8%	16.9%	15.1%	29.4%	7,615
2001 Census						
Private music teachers	2.0%	48.3%	17.0%	14.1%	18.6%	8,445
Composers	4.0%	8.3%	8.9%	13.5%	65.3%	332
Music directors	2.0%	17.4%	7.8%	8.6%	64.1%	399
Instrumental musicians	4.0%	36.1%	17.2%	14.8%	27.9%	6,625
Singers	3.8%	43.6%	17.1%	13.1%	22.5%	1,339
Not specified	2.0%	24.6%	14.8%	13.4%	45.2%	312
Total musicians and related professions	3.8%	35.0%	16.4%	14.2%	30.7%	9,007

* On holidays, sick leave, strike, or temporarily stood down.

** Defined as working a full-time week

Source: ABS, *Employment in Culture 2001* and special tables obtained for 1996 Census.

Table 1.2.1.10: Number of musicians and other arts professionals, States and Territories, 2001

	NSW	Vic	Qld	SA	WA	Tas	NT	ACT	Australia
Private music teachers	2,840	2,061	1,540	725	783	201	46	246	8,442
Music directors	152	118	55	25	34	4	5	6	399
Singers	567	244	312	83	87	15	9	22	1,339
Instrumental musicians	2,346	1,726	1,192	425	597	170	44	125	6,625
Composers	156	97	25	27	10	8	-	8	331
Not specified	126	80	61	18	18	3	3	8	317
Total musicians and related professions	3,347	2,265	1,645	578	746	200	61	169	9,011
Visual arts and craft professions	2,868	2,542	1,857	794	1,020	349	177	173	9,780
Photographers	2,404	1,858	1,213	483	584	133	40	130	6,845
Designers and illustrators	12,529	9,683	4,480	1,869	2,451	369	140	674	32,195
Journalists and related professions	7,165	3,977	2,224	892	1,222	363	110	562	16,515
Authors and related professions	1,621	1,304	464	220	246	78	17	128	4,078
Film, TV, radio and stage directors	3,073	1,690	864	429	467	113	80	143	6,859
Musicians and related professions	3,347	2,265	1,645	578	746	200	61	169	9,011
Actors, dancers and related professions	2,331	1,528	1,272	340	519	61	39	61	6,151
Media presenters	910	493	519	200	293	61	50	55	2,581
Artistic profession not further defined	1,482	1,031	608	255	368	90	30	127	3,991
Total arts professions	37,730	26,371	15,146	6,060	7,916	1,817	744	2,222	98,006
Compare:									
Total cultural occupations	95,444	69,598	40,913	17,559	22,702	5,117	2,243	6,341	259,917
Total employed labour force (000)	2,748.4	2,082.2	1,568.9	635.3	828.8	182.5	90.4	160.9	8,297.4

Source: ABS, *Employment in Culture 2001* (total labour force from 2001 *Quick Census Statistics*).

Table 1.2.1.11: Geographic distributions of musicians and other arts professionals, 2001

	NSW	Vic	Qld	SA	WA	Tas	NT	ACT	Australia
Private music teachers	33.6%	24.4%	18.2%	8.6%	9.3%	2.4%	0.5%	2.9%	100.0%
Music directors	38.1%	29.6%	13.8%	6.3%	8.5%	1.0%	1.3%	1.5%	100.0%
Singers	42.3%	18.2%	23.3%	6.2%	6.5%	1.1%	0.7%	1.6%	100.0%
Instrumental musicians	35.4%	26.1%	18.0%	6.4%	9.0%	2.6%	0.7%	1.9%	100.0%
Composers	47.1%	29.3%	7.6%	8.2%	3.0%	2.4%	0.0%	2.4%	100.0%
Not specified	39.7%	25.2%	19.2%	5.7%	5.7%	0.9%	0.9%	2.5%	100.0%
Total musicians and related professions	37.1%	25.1%	18.3%	6.4%	8.3%	2.2%	0.7%	1.9%	100.0%
Visual arts and craft professions	29.3%	26.0%	19.0%	8.1%	10.4%	3.6%	1.8%	1.8%	100.0%
Photographers	35.1%	27.1%	17.7%	7.1%	8.5%	1.9%	0.6%	1.9%	100.0%
Designers and illustrators	38.9%	30.1%	13.9%	5.8%	7.6%	1.1%	0.4%	2.1%	100.0%
Journalists and related professions	43.4%	24.1%	13.5%	5.4%	7.4%	2.2%	0.7%	3.4%	100.0%
Authors and related professions	39.7%	32.0%	11.4%	5.4%	6.0%	1.9%	0.4%	3.1%	100.0%
Film, TV, radio and stage directors	44.8%	24.6%	12.6%	6.3%	6.8%	1.6%	1.2%	2.1%	100.0%
Musicians and related professions	37.1%	25.1%	18.3%	6.4%	8.3%	2.2%	0.7%	1.9%	100.0%
Actors, dancers and related professions	37.9%	24.8%	20.7%	5.5%	8.4%	1.0%	0.6%	1.0%	100.0%
Media presenters	35.3%	19.1%	20.1%	7.7%	11.4%	2.4%	1.9%	2.1%	100.0%
Artistic profession not further defined	37.1%	25.8%	15.2%	6.4%	9.2%	2.3%	0.8%	3.2%	100.0%
Total arts professions	38.5%	26.9%	15.5%	6.2%	8.1%	1.9%	0.8%	2.3%	100.0%
Compare:									
Total cultural occupations	36.7%	26.8%	15.7%	6.8%	8.7%	2.0%	0.9%	2.4%	100.0%
Total employed labour force	33.1%	25.1%	18.9%	7.7%	10.0%	2.2%	1.1%	1.9%	100.0%

Source: ABS, *Employment in Culture 2001* (total labour force from 2001 *Quick Census Statistics*).

Table 1.2.1.12: Cultural occupations and cultural industries, 2001 Census

Main occupation	Industry					
	Music and theatre productions	Creative arts	Other cultural industries	Total cultural industries	Other industries	All industries

Musicians and related professionals: Number of persons

Music directors	61	-	117	178	221	399
Singers	847	28	92	967	370	1,337
Instrumental musicians	4,255	77	309	4,641	1,989	6,630
Composers	170	57	51	278	52	330
Other *	170	7	32	209	102	311

Total of above	5,503	169	601	6,273	2,734	9,007
----------------	-------	-----	-----	-------	-------	-------

Private music teachers	275	4	48	327	8,114	8,441
------------------------	-----	---	----	-----	-------	-------

Musicians and related professionals: Distributions

Music directors	15.3%	0.0%	29.3%	44.6%	55.4%	100.0%
Singers	63.4%	2.1%	6.9%	72.3%	27.7%	100.0%
Instrumental musicians	64.2%	1.2%	4.7%	70.0%	30.0%	100.0%
Composers	51.5%	17.3%	15.5%	84.2%	15.8%	100.0%
Other *	54.7%	2.3%	10.3%	67.2%	32.8%	100.0%

Total of above	61.1%	1.9%	6.7%	69.6%	30.4%	100.0%
----------------	-------	------	------	-------	-------	--------

Private music teachers	3.3%	0.0%	0.6%	3.9%	96.1%	100.0%
------------------------	------	------	------	------	-------	--------

* Occupations not further defined or not elsewhere classified

Source: Australian Bureau of Statistics, *Employment in Culture 2001* (Cat 6273.0).

Table 1.2.1.13: Ranking of main cultural occupations by number employed, 2001

	All industries	In cultural industries	Ratio cultural/all
Artists and related professionals			
Designers and illustrators	32,185	12,969	40.3%
Journalists and related professions	16,517	12,657	76.6%
Visual arts and crafts professionals	9,779	6,494	66.4%
Musicians and related professions	9,007	6,273	69.6%
Film, TV, radio and stage directors	6,850	5,555	81.1%
Photographers	6,844	4,492	65.6%
Actors, dancers and related professions	6,147	2,695	43.8%
Authors and related professions	4,076	2,972	72.9%
Media presenters	2,579	1,810	70.2%
Artistic profession not further defined	3,991	2,256	56.5%
Total artists and related professions	97,975	58,173	59.4%
Other cultural professionals*			
Ministers of religion	14,239	12,232	85.9%
Private art, music, drama, and dance teachers	13,753	523	3.8%
Architects and landscape architects	13,101	10,843	82.8%
Librarians	10,313	3,466	33.6%
Media producers and artistic directors	6,558	5,650	86.2%
Urban and regional planners	5,426	960	17.7%
Advertising specialists	3,445	2,930	85.1%
Environment, park, land care managers	2,329	250	10.7%
Interpreters	2,129	24	1.1%
Park rangers	1,606	1,112	69.2%
Translators	961	84	8.7%
Museum or gallery curators	848	582	68.6%
Archivists	799	300	37.5%
Historians	572	154	26.9%
Conservators	405	214	52.8%
Total cultural professionals	174,459	97,497	55.9%
Total cultural occupations	259,856	127,271	49.0%
of which:			
Musicians and related professionals	3.5%	4.9%	
All artists and related professionals	37.7%	45.7%	
All other cultural occupations	85,397	29,774	34.9%
of which:			
Library technicians and assistants	14,526	5,908	40.7%
Printing tradesmen and assistants	34,037	7,355	21.6%
Performing arts support workers	10,129	6,373	62.9%
Other theatre and cinema workers	5,266	2,873	54.6%
All other	21,439	7,265	33.9%

* "Professional" defined as ASCO classes 1296 to 2549. Higher ASCO classes cover technical, trade and non-trade workers.

Source: Australian Bureau of Statistics, *Employment in Culture 2001* (Cat 6273.0).

Chart 1.2.1.1: Growth in number of musicians

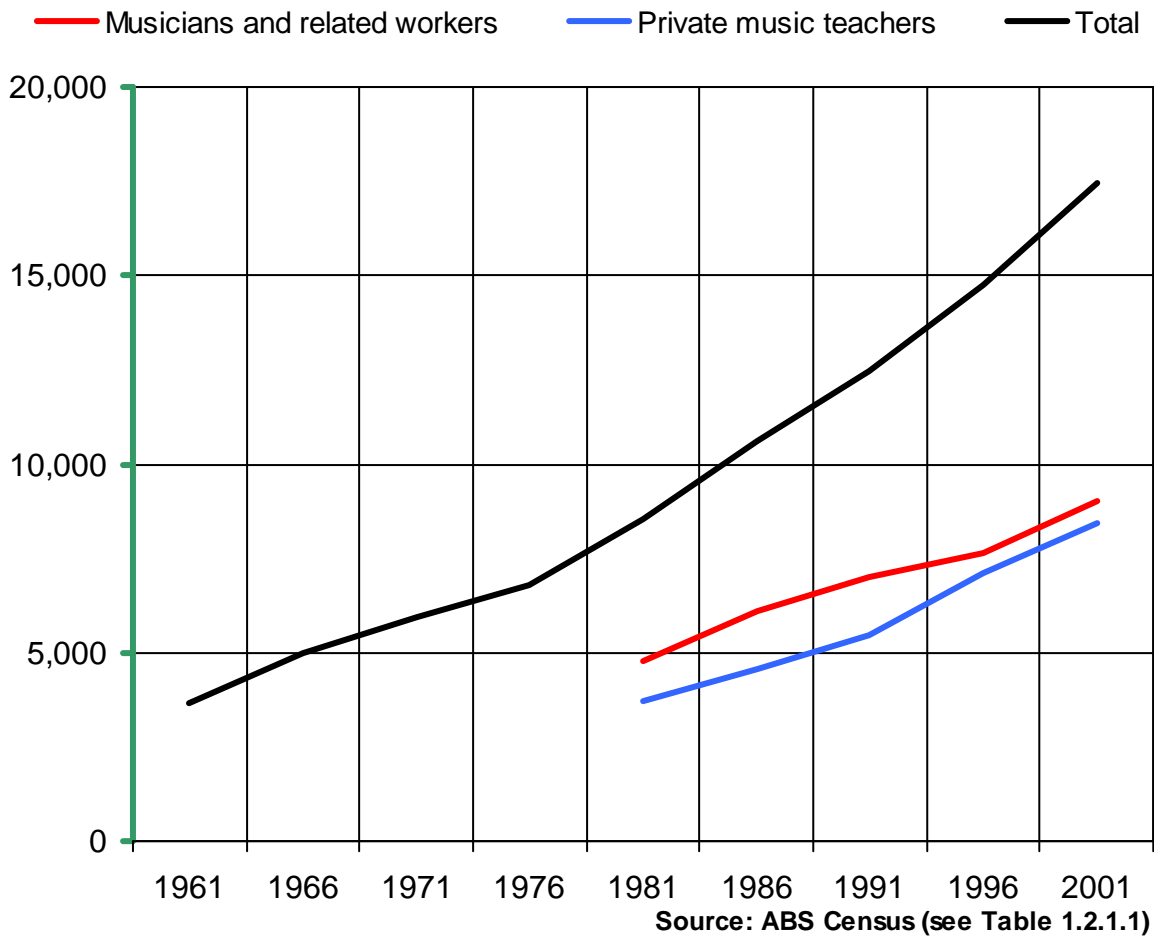


Chart 1.2.1.2: Annual growth rates

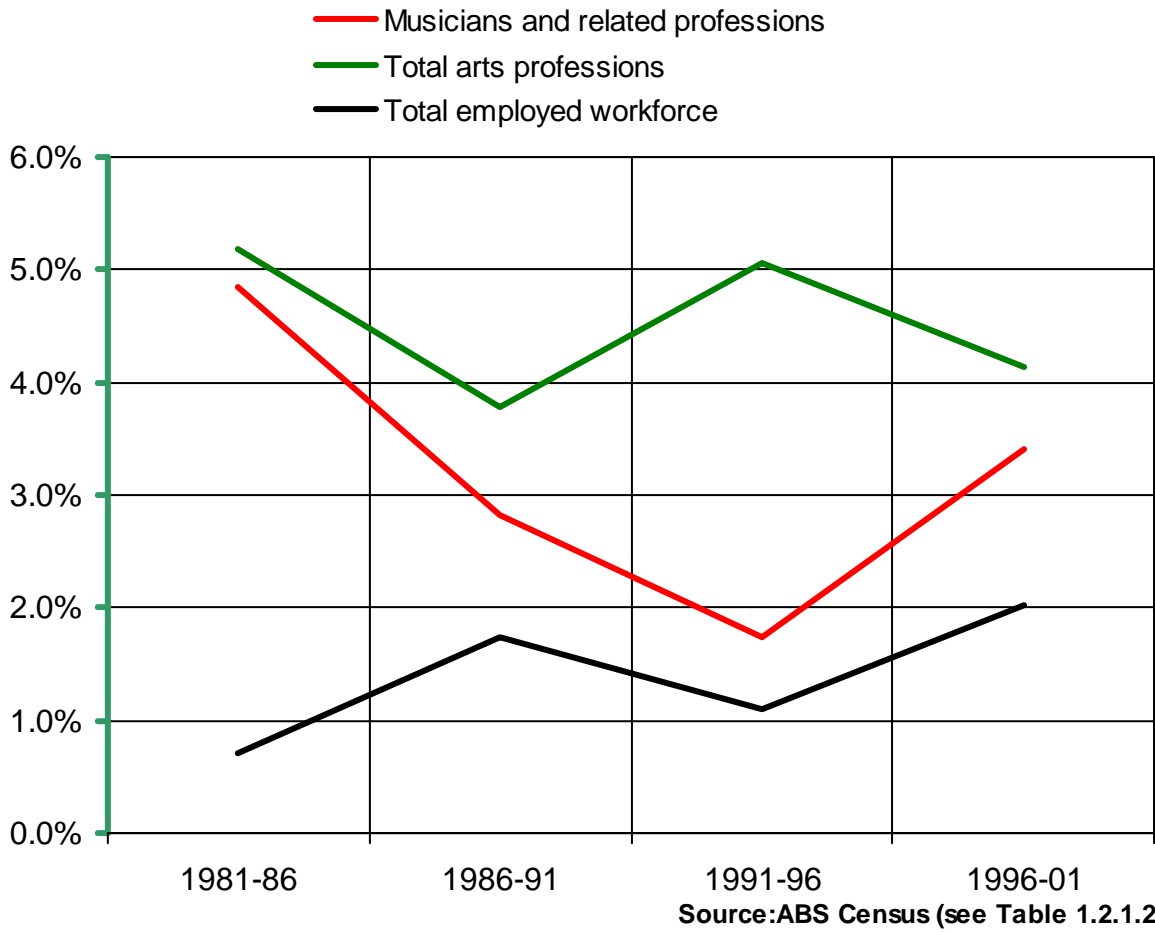
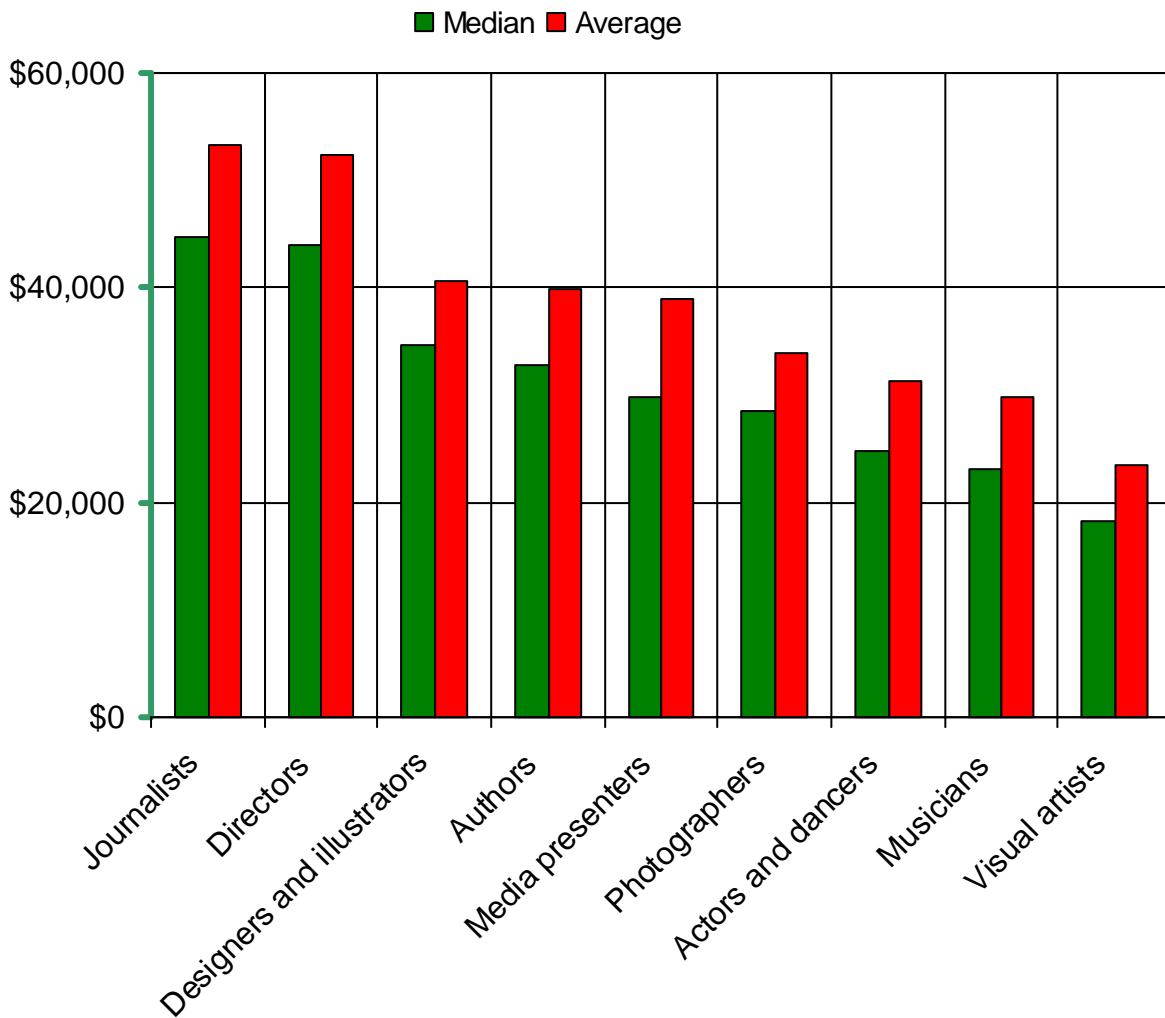


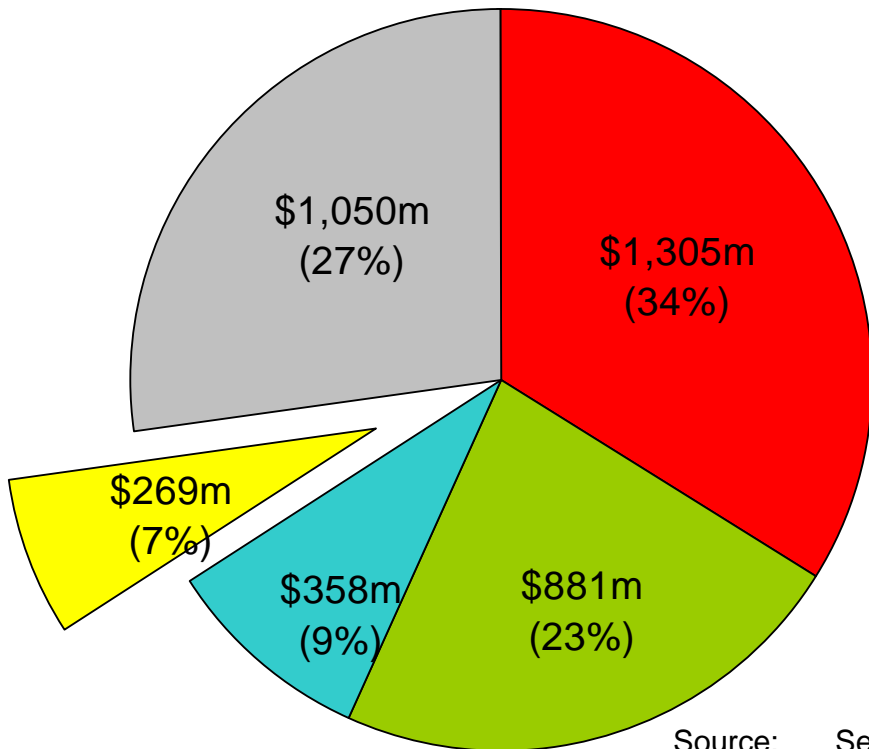
Chart 1.2.1.3: Incomes of arts professionals, 2001



Source:ABS Census (see Table 1.2.1.5)

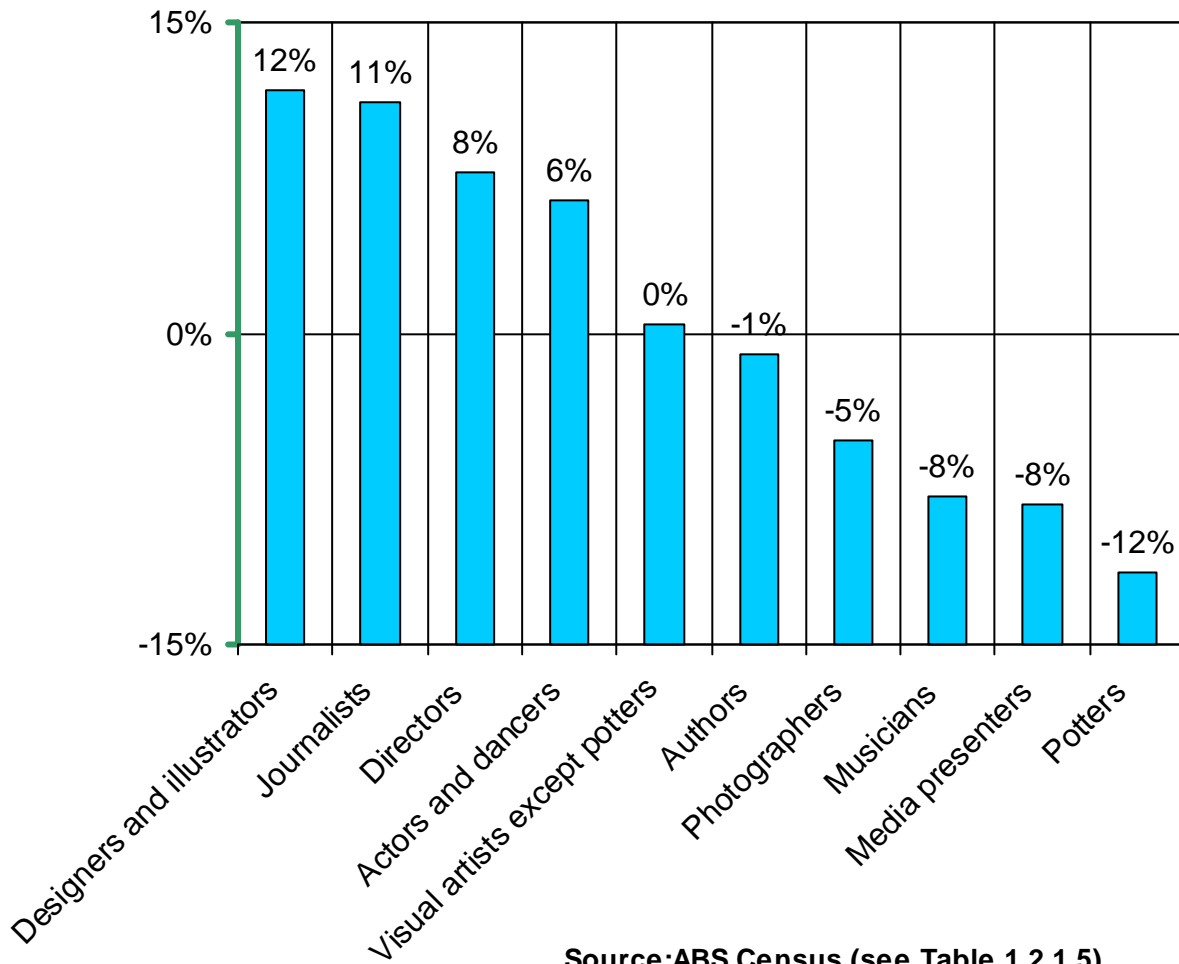
Chart 1.2.1.4: Total incomes of arts professionals, 2001

- Designers and illustrators
- Journalists and related professions
- Film, TV, radio and stage directors
- Musicians and related professions
- All other arts professions



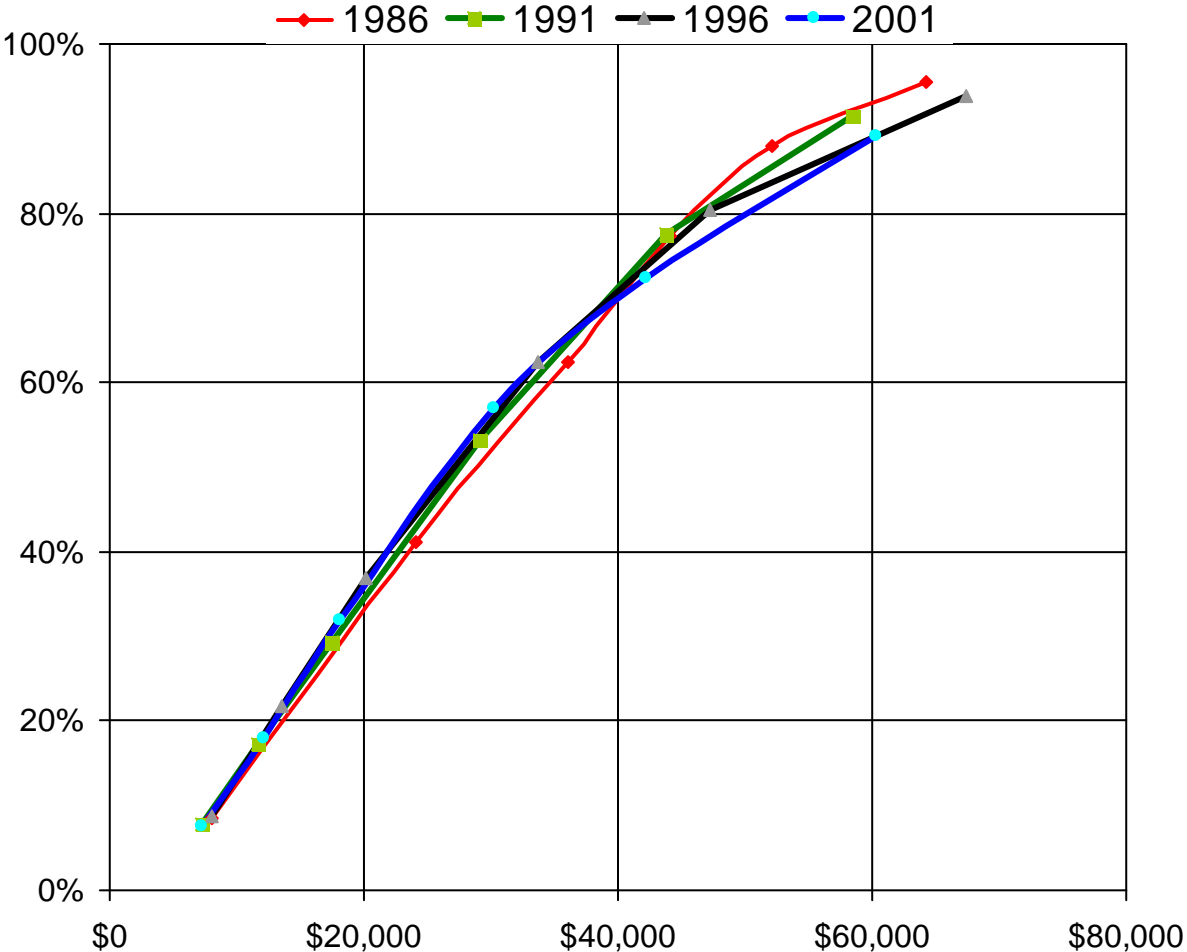
Source: See Table

Chart 1.2.1.5: Estimated change in median income of arts professionals, 1986-2001 (at constant prices)



Source: ABS Census (see Table 1.2.1.5)

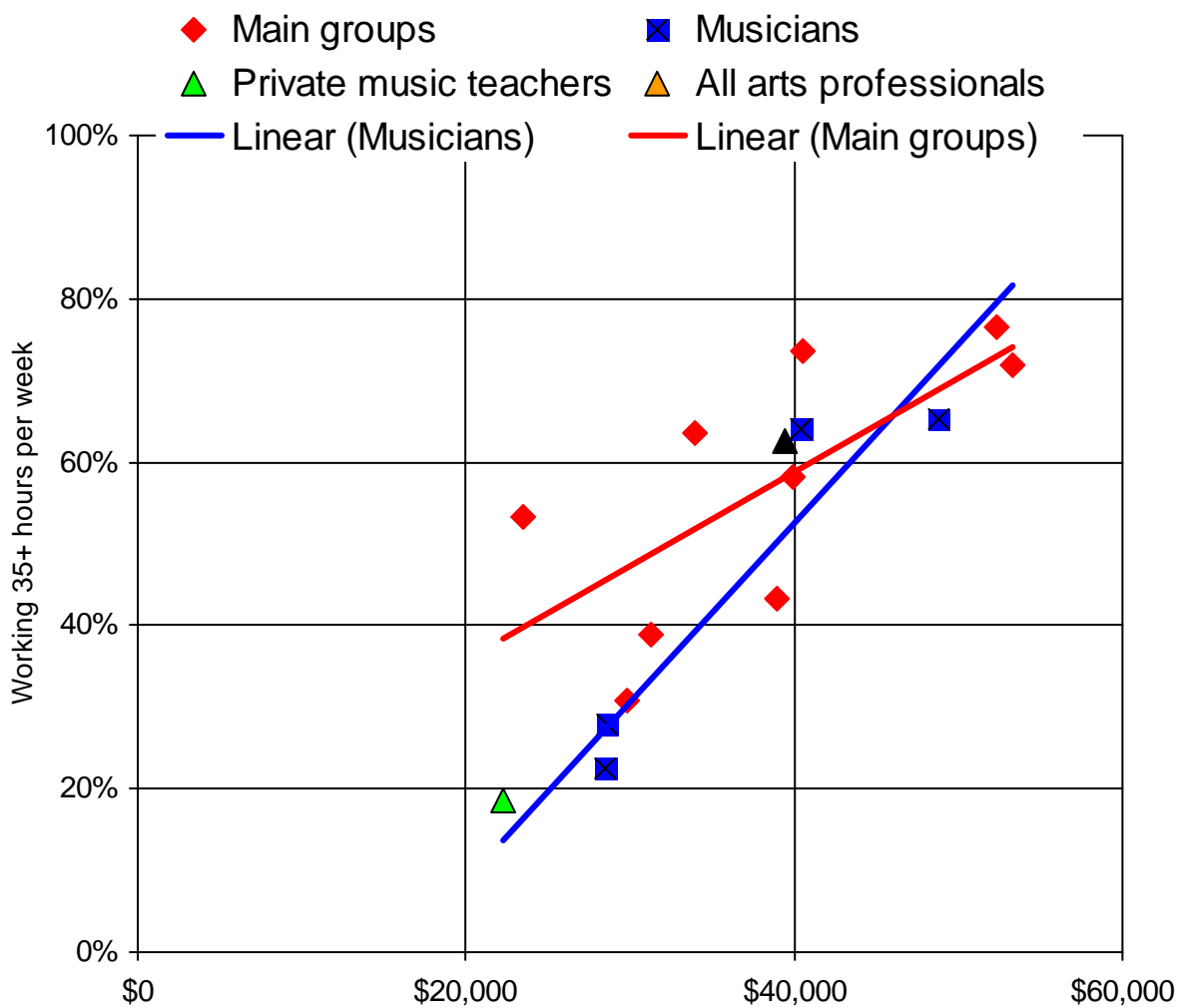
Chart 1.2.1.6: Cumulative income distributions for musicians



Income at 2006 values

Source: Derived from Table 1.2.1.7

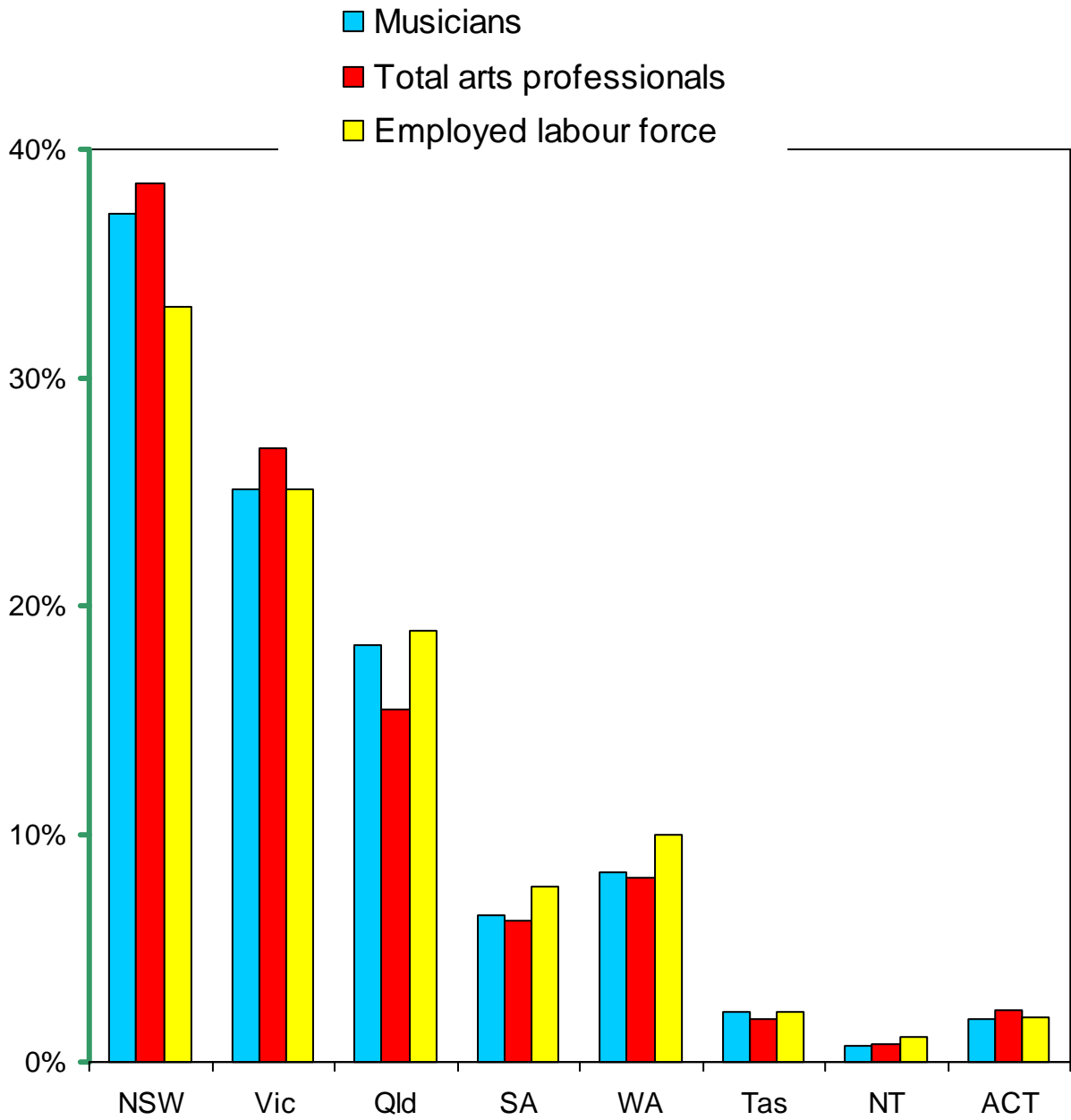
Chart 1.2.1.7: Income versus full-time work, 2001



Median income 2001

Source: Derived from Tables 1.2.1.5 and 1.2.1.8

Chart 1.2.1.8: Geographical distributions, 2001



Source: ABS Census (see Table 1.2.1.10)