

## **2.2.1 Attendance at cultural performances**

Table 2.2.1.1: Attendance at live performances and cinemas, by age, 1991-2006	2
Table 2.2.1.2: Elements of total growth in attendances	4
Table 2.2.1.3: Population distributions 1991-2006 (15+)	4
Table 2.2.1.4: Median age of people attending live performances and cinemas	4
Table 2.2.1.5: Male and female attendance rates, 2006	5
Table 2.2.1.6: Attendance rates in States and Territories, 2006	6
Table 2.2.1.7: Number of persons attending either operas and musicals, or both	7
Table 2.2.1.8: Rates of attending operas and musicals, or both	8
Table 2.2.1.9: Attendance rates in the 2002 and 2006 General Social Surveys (age: 18+)	9
Table 2.2.1.10: Frequency of attendances in 2005-06, as stated by respondents	9
Table 2.2.1.11: Comparison with ticketing statistics	10
Table 2.2.1.12: Total attendance and revenue, ticketing surveys 2004 and 2005	10
Chart 2.2.1.1: Attendance rates for classical music performances, by age	11
Chart 2.2.1.2: Attendance rates for popular music performances, by age	11
Chart 2.2.1.3: Attendance rates for musicals and operas, by age	12
Chart 2.2.1.4: Attendance rates for theatre performances, by age	12
Chart 2.2.1.5: Attendance rates for dance performances, by age	13

Table 2.2.1.1: Attendance at live performances and cinemas, by age, 1991-2006

Age group (years)	Thousand persons				Attendance rates			
	1991	1995	1999	2006	1991	1995	1999	2006
<b>Classical music concerts</b>								
15-17	44.1	43.9	41.2	52.0	5.6%	5.6%	5.0%	6.4%
18-24	109.2	119.5	117.8	116.7	5.8%	6.2%	6.4%	6.0%
25-34	168.9	180.6	209.1	193.4	6.2%	6.4%	7.3%	7.0%
35-44	258.8	219.1	252.6	244.7	10.2%	8.1%	8.7%	8.3%
45-54	184.1	230.7	291.8	345.3	10.2%	10.5%	11.6%	12.4%
55-64	130.5	140.6	191.5	284.8	9.3%	9.4%	11.5%	12.8%
65-74	93.0	108.0	134.5	163.1	8.3%	8.2%	9.9%	11.8%
75+	41.3	38.7	71.7	108.1	6.7%	4.7%	7.5%	9.6%
<b>Total</b>	<b>1,029.9</b>	<b>1,081.1</b>	<b>1,310.2</b>	<b>1,508.1</b>	<b>8.0%</b>	<b>7.7%</b>	<b>8.8%</b>	<b>9.4%</b>
<b>Popular music concerts</b>								
15-17	299.0	282.7	308.2	255.1	38.0%	36.1%	37.3%	31.2%
18-24	1,012.3	933.2	778.6	774.8	53.6%	48.7%	42.4%	40.0%
25-34	949.7	969.7	936.1	860.2	35.0%	34.5%	32.8%	31.0%
35-44	703.9	731.2	751.4	742.0	27.6%	26.9%	25.9%	25.1%
45-54	401.7	496.8	571.1	737.8	22.2%	22.5%	22.7%	26.5%
55-64	219.8	216.7	269.9	413.7	15.7%	14.4%	16.2%	18.7%
65-74	127.7	124.4	120.9	179.4	11.4%	9.4%	8.9%	12.9%
75+	41.3	36.1	45.7	72.9	6.7%	4.4%	4.8%	6.5%
<b>Total</b>	<b>3,755.4</b>	<b>3,790.8</b>	<b>3,781.9</b>	<b>4,035.9</b>	<b>29.2%</b>	<b>26.9%</b>	<b>25.4%</b>	<b>25.2%</b>
<b>Musicals and operas</b>								
15-17	154.2	153.2	130.3	148.1	19.6%	19.6%	15.8%	18.1%
18-24	359.2	378.0	263.9	266.3	19.0%	19.7%	14.4%	13.7%
25-34	475.2	501.0	486.6	378.1	17.5%	17.8%	17.0%	13.6%
35-44	560.4	530.1	449.4	502.1	22.0%	19.5%	15.5%	17.0%
45-54	463.2	544.0	505.6	527.1	25.6%	24.7%	20.1%	19.0%
55-64	294.8	302.7	297.8	440.7	21.0%	20.2%	17.9%	19.9%
65-74	196.2	222.3	197.1	221.7	17.5%	16.8%	14.5%	16.0%
75+	78.4	90.9	99.8	130.0	12.7%	11.1%	10.5%	11.5%
<b>Total</b>	<b>2,581.6</b>	<b>2,722.2</b>	<b>2,430.5</b>	<b>2,614.1</b>	<b>20.0%</b>	<b>19.3%</b>	<b>16.3%</b>	<b>16.3%</b>
<b>Theatre performances</b>								
15-17	216.4	206.9	207.3	200.3	27.5%	26.5%	25.1%	24.5%
18-24	336.0	340.3	269.7	306.4	17.8%	17.8%	14.7%	15.8%
25-34	545.8	506.8	500.2	428.1	20.1%	18.0%	17.5%	15.4%
35-44	540.6	479.5	486.7	459.7	21.2%	17.7%	16.8%	15.5%
45-54	325.8	400.7	492.9	565.3	18.0%	18.2%	19.6%	20.3%
55-64	202.0	216.4	269.8	445.2	14.4%	14.4%	16.2%	20.1%
65-74	145.7	134.9	162.2	232.7	13.0%	10.2%	11.9%	16.8%
75+	55.4	50.8	76.2	85.4	9.0%	6.2%	8.0%	7.6%
<b>Total</b>	<b>2,367.7</b>	<b>2,336.3</b>	<b>2,465.0</b>	<b>2,723.1</b>	<b>18.4%</b>	<b>16.6%</b>	<b>16.5%</b>	<b>17.0%</b>

Table 2.2.1.1 concluded

Age group (years)	Thousand persons				Attendance rates			
	1991	1995	1999	2006	1991	1995	1999	2006
<b>Dance performances</b>								
15-17	102.3	97.7	104.7	154.2	13.0%	12.5%	12.7%	18.8%
18-24	222.0	212.6	137.8	159.4	11.8%	11.1%	7.5%	8.2%
25-34	308.5	278.4	267.6	262.1	11.4%	9.9%	9.4%	9.4%
35-44	346.4	318.9	311.5	362.9	13.6%	11.7%	10.7%	12.3%
45-54	210.1	253.7	270.1	355.8	11.6%	11.5%	10.7%	12.8%
55-64	139.6	121.4	134.8	188.8	10.0%	8.1%	8.1%	8.5%
65-74	93.4	89.0	86.8	93.4	8.3%	6.7%	6.4%	6.7%
75+	29.4	35.8	31.6	48.3	4.8%	4.4%	3.3%	4.3%
<b>Total</b>	<b>1,451.7</b>	<b>1,407.5</b>	<b>1,344.9</b>	<b>1,624.9</b>	<b>11.3%</b>	<b>10.0%</b>	<b>9.0%</b>	<b>10.2%</b>
<b>Other performing arts</b>								
15-17	na	174.7	135.8	163.4	na	22.3%	16.4%	20.0%
18-24	na	494.3	333.0	312.8	na	25.8%	18.1%	16.1%
25-34	na	706.5	631.0	529.3	na	25.2%	22.1%	19.0%
35-44	na	589.6	678.3	572.2	na	21.7%	23.4%	19.3%
45-54	na	349.0	404.2	482.2	na	15.8%	16.1%	17.3%
55-64	na	168.5	225.1	353.1	na	11.2%	13.5%	15.9%
65-74	na	115.5	163.2	162.1	na	8.7%	12.0%	11.7%
75+	na	36.3	77.7	79.9	na	4.4%	8.2%	7.1%
<b>Total</b>	<b>na</b>	<b>2,634.4</b>	<b>2,648.3</b>	<b>2,655.0</b>	<b>na</b>	<b>18.7%</b>	<b>17.8%</b>	<b>16.6%</b>
<b>Cinemas</b>								
15-17	na	701.8	751.4	761.7	na	89.7%	90.9%	93.1%
18-24	na	1,648.9	1,622.8	1,637.6	na	86.1%	88.3%	84.5%
25-34	na	2,051.1	2,244.2	2,102.7	na	73.0%	78.6%	75.7%
35-44	na	1,829.3	2,105.2	2,030.3	na	67.3%	72.5%	68.6%
45-54	na	1,255.4	1,604.8	1,743.8	na	56.9%	63.8%	62.7%
55-64	na	627.5	836.1	1,233.2	na	41.8%	50.3%	55.6%
65-74	na	445.5	564.5	620.7	na	33.6%	41.5%	44.8%
75+	na	174.4	258.7	301.4	na	21.3%	27.2%	26.7%
<b>Total</b>	<b>na</b>	<b>8,733.9</b>	<b>9,987.7</b>	<b>10,431.4</b>	<b>na</b>	<b>62.1%</b>	<b>67.0%</b>	<b>65.2%</b>
<b>Total population represented, and change since last survey</b>								
15-17	786.8	782.1	827.0	818.1	-0.6%	5.7%	-1.1%	
18-24	1,889.2	1,915.6	1,838.0	1,938.3	1.4%	-4.1%	5.5%	
25-34	2,714.0	2,808.4	2,856.2	2,779.3	3.5%	1.7%	-2.7%	
35-44	2,546.0	2,716.5	2,904.6	2,959.8	6.7%	6.9%	1.9%	
45-54	1,806.7	2,205.5	2,517.0	2,779.5	22.1%	14.1%	10.4%	
55-64	1,400.7	1,500.1	1,662.2	2,217.3	7.1%	10.8%	33.4%	
65-74	1,123.7	1,324.3	1,358.7	1,386.2	17.9%	2.6%	2.0%	
75+	615.1	817.5	950.4	1,130.2	32.9%	16.3%	18.9%	
<b>Total</b>	<b>12,882.2</b>	<b>14,070.0</b>	<b>14,914.1</b>	<b>16,008.7</b>		<b>9.2%</b>	<b>6.0%</b>	<b>7.3%</b>

Source: ABS, *Attendance at selected cultural venues and events, 2005-06* and previous years (Cat 4113.0).

Italics (15-17 year olds 1991: Estimated. Also 15-17 year group in 1991 estimated from ABS, [State/Territory] *Young People 1996* (Cat 4123.[1-8]).

**Table 2.2.1.2: Elements of total growth in attendances**

Ranked by total growth 1991-2006	A: 1991-2006			B: 1999-2006		
	Due to change in		Total growth	Due to change in		Total growth
	population	attendance		population	attendance	
Classical music concerts	24.3%	17.8%	46.4%	7.3%	7.2%	15.1%
Theatre performances	24.3%	-7.4%	15.0%	7.3%	2.9%	10.5%
Dance performances	24.3%	-9.9%	11.9%	7.3%	12.6%	20.8%
Popular music concerts	24.3%	-13.5%	7.5%	7.3%	-0.6%	6.7%
Musicals and operas	24.3%	-18.5%	1.3%	7.3%	0.2%	7.6%
Cinemas	24.3%	na	na	7.3%	-2.7%	4.4%
Other performing arts	24.3%	na	na	7.3%	-6.6%	0.3%

Note: The total percentage rates are linked to their two elements by multiplication. For example classical music concerts 1991-2006:  $(1 + 24.3\%) \times (1 + 17.8\%) = 1 + 46.4\%$ .

Source: See Table 2.2.1.1

**Table 2.2.1.3: Population distributions 1991-2006 (15+)**

Age group	1991	1995	1999	2006	Born (2006) between
15-17	6.1%	5.6%	5.5%	5.1%	1989 & 1991
18-24	14.7%	13.6%	12.3%	12.1%	1982 & 1988
25-34	21.1%	20.0%	19.2%	17.4%	1972 & 1981
35-44	19.8%	19.3%	19.5%	18.5%	1962 & 1971
45-54	14.0%	15.7%	16.9%	17.4%	1952 & 1961
55-64	10.9%	10.7%	11.1%	13.9%	1942 & 1951
65-74	8.7%	9.4%	9.1%	8.7%	1932 & 1941
75+	4.8%	5.8%	6.4%	7.1%	1900 & 1931
<b>Total</b>	<b>100.0%</b>	<b>100.0%</b>	<b>100.0%</b>	<b>100.0%</b>	

Source: See Table 2.2.1.1

**Table 2.2.1.4: Median age of people attending live performances and cinemas**

Ranked by median age in 2006	1991	1995	1999	2006	15-year increase
Classical music concerts	42.5	44.0	46.2	49.3	16%
Musicals and operas	40.4	41.2	42.5	45.4	12%
Theatre performances	36.6	37.4	40.3	44.3	21%
Dance performances	37.7	38.6	40.2	41.5	10%
Other performing arts*	na	34.2	38.3	40.6	19%
Cinemas*	na	34.8	36.7	38.4	10%
Popular music concerts	31.0	32.0	33.6	36.7	19%
<b>Total population 15+</b>	<b>39.1</b>	<b>40.6</b>	<b>41.7</b>	<b>43.3</b>	<b>11%</b>

Shows 11-year increase 1995-2006

Source: See Table 2.2.1.1

**Table 2.2.1.5: Male and female attendance rates, 2006**

<b>Age group (years)</b>									
	15-17	18-24	25-34	35-44	45-54	55-64	65-74	75+	Total
<b>Classical music concerts</b>									
Males	1.2%	5.6%	6.6%	6.3%	10.9%	12.0%	11.9%	7.6%	8.2%
Females	11.2%	6.5%	7.3%	10.2%	13.9%	13.7%	11.6%	11.0%	10.6%
Persons	6.4%	6.0%	7.0%	8.3%	12.4%	12.8%	11.8%	9.6%	9.4%
F/M ratio	9.33	1.16	1.11	1.62	1.28	1.14	0.97	1.45	1.29
<b>Popular music concerts</b>									
Males	26.8%	36.3%	32.9%	24.8%	24.9%	17.9%	14.0%	6.4%	24.8%
Females	35.3%	43.9%	29.1%	25.3%	28.1%	19.4%	11.9%	6.5%	25.6%
Persons	31.2%	40.0%	30.9%	25.1%	26.5%	18.7%	12.9%	6.5%	25.2%
F/M ratio	1.32	1.21	0.88	1.02	1.13	1.08	0.85	1.02	1.03
<b>Musicals and operas</b>									
Males	11.3%	6.8%	9.8%	12.1%	13.8%	17.3%	14.7%	8.1%	12.0%
Females	24.5%	21.2%	17.4%	21.7%	24.0%	22.5%	17.3%	14.1%	20.6%
Persons	18.1%	13.7%	13.6%	17.0%	19.0%	19.9%	16.0%	11.5%	16.3%
F/M ratio	2.17	3.12	1.78	1.79	1.74	1.30	1.18	1.74	1.72
<b>Theatre performances</b>									
Males	18.2%	10.7%	13.0%	10.8%	16.4%	15.9%	13.8%	4.2%	13.1%
Females	30.5%	21.3%	17.8%	20.1%	24.1%	24.3%	19.6%	10.1%	20.8%
Persons	24.5%	15.8%	15.4%	15.5%	20.3%	20.1%	16.8%	7.6%	17.0%
F/M ratio	1.68	1.99	1.37	1.86	1.47	1.53	1.42	2.40	1.59
<b>Dance performances</b>									
Males	7.5%	5.4%	7.7%	8.9%	9.1%	5.2%	5.1%	1.9%	6.9%
Females	29.6%	11.2%	11.1%	15.6%	16.4%	11.8%	8.4%	6.1%	13.3%
Persons	18.9%	8.2%	9.4%	12.3%	12.8%	8.5%	6.7%	4.3%	10.2%
F/M ratio	3.95	2.07	1.44	1.75	1.80	2.27	1.65	3.21	1.93
<b>Other performing arts</b>									
Males	16.2%	11.0%	17.1%	18.4%	16.3%	14.0%	10.4%	7.8%	14.8%
Females	23.6%	21.7%	21.0%	20.3%	18.3%	17.9%	12.9%	6.5%	18.3%
Persons	20.0%	16.1%	19.0%	19.3%	17.3%	15.9%	11.7%	7.1%	16.6%
F/M ratio	1.46	1.97	1.23	1.10	1.12	1.28	1.24	0.83	1.24
<b>Cinemas</b>									
Males	91.7%	81.7%	73.6%	65.0%	58.7%	53.1%	40.3%	23.6%	62.5%
Females	94.5%	87.5%	77.6%	72.1%	66.7%	58.1%	49.1%	28.9%	67.7%
Persons	93.1%	84.5%	75.7%	68.6%	62.7%	55.6%	44.8%	26.7%	65.2%
F/M ratio	1.03	1.07	1.05	1.11	1.14	1.09	1.22	1.22	1.08
<b>Total population aged 15+ (thousand persons)</b>									
Males	398.0	1,003.4	1,381.6	1,461.3	1,373.5	1,109.1	677.1	485.3	7,889.3
Females	420.2	934.9	1,397.6	1,498.3	1,406.0	1,108.3	709.1	644.9	8,119.4
Persons	818.1	1,938.3	1,779.3	2,959.6	2,779.5	2,217.3	1,386.2	1,130.2	16,008.6
F/M ratio	1.06	0.93	1.01	1.03	1.02	1.00	1.05	1.33	1.03

Source: See Table 2.2.1.1 (Cat 4114.0, 2005-06 only)

**Table 2.2.1.6: Attendance rates in States and Territories, 2006**

	NSW	Vic	Qld	SA	WA	Tas	NT	ACT	Total
Classical music concerts	9.7%	9.3%	8.2%	9.7%	10.8%	9.3%	7.9%	13.3%	9.4%
Popular music concerts	23.9%	23.6%	25.8%	26.2%	30.8%	24.1%	29.5%	34.1%	25.2%
Musicals and operas	16.6%	18.4%	15.4%	13.0%	14.8%	15.3%	9.4%	19.1%	16.3%
Theatre performances	16.9%	17.9%	15.2%	17.6%	16.8%	19.5%	12.1%	25.5%	17.0%
Dance performances	10.9%	9.9%	8.7%	11.2%	9.7%	7.5%	9.6%	16.6%	10.2%
Other performing arts	15.3%	16.7%	16.4%	20.5%	17.6%	16.9%	14.8%	19.7%	16.6%
Cinemas	62.9%	67.1%	66.8%	64.0%	66.6%	56.4%	68.2%	71.3%	65.2%

<b>Total (thousand persons)</b>	<b>5,364</b>	<b>4,028</b>	<b>3,084</b>	<b>1,225</b>	<b>1,561</b>	<b>382</b>	<b>111</b>	<b>254</b>	<b>16,009</b>
---------------------------------	--------------	--------------	--------------	--------------	--------------	------------	------------	------------	---------------

	Capital cities*	Rest of Australia	Capital city ratio
Classical music concerts	10.6%	7.4%	1.43
Popular music concerts	25.8%	24.2%	1.07
Musicals and operas	18.4%	12.9%	1.43
Theatre performances	17.9%	15.5%	1.15
Dance performances	10.3%	10.0%	1.03
Other performing arts	17.2%	15.6%	1.10
Cinemas	69.2%	58.4%	1.18

**Resident population, thousand persons (2006 Census)**

Capital city	4,119	3,593	1,763	1,106	1,445	201	106	323	12,655
Total population	6,549	4,932	3,905	1,514	1,959	476	193	324	19,853
Capital city proportion	62.9%	72.8%	45.2%	73.0%	73.8%	42.1%	54.9%	99.7%	63.7%

\* Excluding Canberra and Hobart (included in rest of Australia).

Source: See Table 2.2.1.1.

**Table 2.2.1.7: Number of persons attending either operas and musicals, or both**

	Opera OR musical	Total musical	Total opera	Grand total	Both opera and musical	Musical only	Opera only
<b>2006</b>							
NSW	890.3	811.3	141.0	952.3	62.0	749.3	79.0
Vic	740.7	680.7	124.8	805.5	64.8	615.9	60.0
Qld	475.9	442.4	63.1	505.5	29.6	412.8	33.5
SA	159.4	150.7	23.1	173.8	14.4	136.3	8.7
WA	230.4	209.1	36.8	245.9	15.5	193.6	21.3
Tas	58.5	54.4	7.6	62.0	3.5	50.9	4.1
NT	10.4	10.0	0.7	10.7	0.3	9.7	0.4
ACT	48.4	43.5	8.5	52.0	3.6	39.9	4.9
Australia	2,614.0	2,402.1	405.6	2,807.7	193.7	2,208.4	211.9
<b>1999</b>							
NSW	892.6	769.7	205.1	974.8	82.2	687.5	122.9
Vic	653.2	577.7	138.5	716.2	63.0	514.7	75.5
Qld	351.8	320.3	61.9	382.2	30.4	289.9	31.5
SA	161.7	141.4	35.5	176.9	15.2	126.2	20.3
WA	274.8	242.2	52.7	294.9	20.1	222.1	32.6
Tas	42.3	40.2	4.1	44.3	2.0	38.2	2.1
NT	11.4	10.2	1.3	11.5	0.1	10.1	1.2
ACT	42.6	35.2	11.4	46.6	4.0	31.2	7.4
Australia	2,430.4	2,136.9	510.5	2,647.4	217.0	1,919.9	293.5
<b>1995</b>							
NSW	1,044.3	898.7	278.9	1,177.6	133.3	765.4	145.6
Vic	705.4	626.2	166.5	792.7	87.3	538.9	79.2
Qld	474.9	435.1	77.5	512.6	37.7	397.4	39.8
SA	197.1	169.8	44.7	214.5	17.4	152.4	27.3
WA	203.6	184.2	41.4	225.6	22.0	162.2	19.4
Tas	30.7	25.3	7.8	33.1	2.4	22.9	5.4
NT	8.6	7.1	2.4	9.5	0.9	6.2	1.5
ACT	57.4	48.5	15.2	63.7	6.3	42.2	8.9
Australia	2,722.0	2,394.9	634.4	3,029.3	307.3	2,087.6	327.1

Italics: Relative standard error 25-50% (NT opera 2005-06 >50% and too unreliable).

Source: See Table 2.2.1.1 (2005-06 and 1999 releases of ABS Cat 4114.0).

**Table 2.2.1.8: Rates of attending operas and musicals, or both**

	Opera OR musical	Total musical	Total opera	Grand total	Both opera and musical	Musical only	Opera only
<b>2006</b>							
NSW	16.6%	15.1%	2.6%	17.8%	1.2%	14.0%	1.5%
Vic	18.4%	16.9%	3.1%	20.0%	1.6%	15.3%	1.5%
Qld	15.4%	14.3%	2.0%	16.4%	1.0%	13.4%	1.1%
SA	13.0%	12.3%	1.9%	14.2%	1.2%	11.1%	0.7%
WA	14.8%	13.4%	2.4%	15.8%	1.0%	12.4%	1.4%
Tas	15.3%	<i>14.2%</i>	2.0%	<i>16.2%</i>	<i>0.9%</i>	<i>13.3%</i>	<i>1.1%</i>
NT	9.4%	<i>9.0%</i>	<i>0.6%</i>	9.6%	<i>0.3%</i>	8.7%	<i>0.4%</i>
ACT	19.1%	17.2%	3.4%	20.5%	<i>1.4%</i>	15.7%	<i>1.9%</i>
Australia	16.3%	15.0%	2.5%	17.5%	1.2%	13.8%	1.3%
<b>1999</b>							
NSW	17.6%	15.2%	4.1%	19.3%	1.6%	13.6%	2.4%
Vic	17.4%	15.4%	3.7%	19.1%	1.7%	13.7%	2.0%
Qld	12.8%	11.7%	2.3%	13.9%	1.1%	10.6%	1.1%
SA	13.5%	11.8%	3.0%	14.8%	1.3%	10.6%	1.7%
WA	18.9%	16.6%	3.6%	20.2%	1.4%	15.3%	2.2%
Tas	11.4%	10.9%	1.1%	12.0%	<i>0.5%</i>	10.3%	<i>0.6%</i>
NT	10.5%	9.4%	1.2%	10.6%	<i>0.1%</i>	9.3%	1.1%
ACT	18.0%	14.9%	4.8%	19.7%	<i>1.7%</i>	13.2%	3.1%
Australia	16.3%	14.3%	3.4%	17.8%	1.5%	12.9%	2.0%
<b>1995</b>							
NSW	21.8%	18.8%	5.8%	24.6%	2.8%	16.0%	3.0%
Vic	19.9%	17.7%	4.7%	22.4%	2.5%	15.2%	2.2%
Qld	18.8%	17.2%	3.1%	20.3%	1.5%	15.7%	1.6%
SA	16.9%	14.5%	3.8%	18.3%	1.5%	13.0%	2.3%
WA	15.3%	13.8%	3.1%	16.9%	1.7%	12.2%	1.5%
Tas	8.4%	6.9%	2.1%	9.0%	<i>0.7%</i>	6.2%	<i>1.5%</i>
NT	7.1%	5.9%	2.0%	7.9%	<i>0.7%</i>	5.1%	<i>1.2%</i>
ACT	25.0%	21.1%	6.6%	27.8%	2.7%	18.4%	3.9%
Australia	19.3%	17.0%	4.5%	21.5%	2.2%	14.8%	2.3%

Italics: Relative standard error 25-50% (NT opera 2005-06 >50% and too unreliable).

Source: See Table 2.2.1.1 (2005-06 and 1999 releases of ABS Cat 4114.0).

**Table 2.2.1.9: Attendance rates in the 2002 and 2006 General Social Surveys (Age: 18+)**

	2002			2006			MPHS 2005-06*
	Males	Females	Persons	Males	Females	Persons	
Classical music concerts	7.7%	10.2%	9.0%	10.7%	14.0%	12.4%	9.6%
Popular music concerts	26.6%	26.2%	26.4%	33.0%	31.9%	32.4%	24.9%
Theatre performances	15.3%	20.6%	18.0%	18.3%	25.4%	21.9%	16.6%
Dance performances	8.4%	13.4%	10.9%	12.0%	19.5%	15.8%	9.7%
Musicals and operas	15.1%	22.1%	18.7%	19.2%	27.1%	23.2%	16.2%
Other performing arts	19.2%	21.5%	20.4%	20.1%	24.1%	22.1%	16.4%
Cinemas	68.2%	71.6%	69.9%	66.7%	70.4%	68.6%	63.7%
Thousand persons aged 18+	7,177	7,327	14,503	7,553	7,754	15,307	na

\* Adjusted to exclude 15-17 year olds

Source: ABS, *General Social Survey: Summary Results 2006*, pages 77 and 101 (Cat 4159.0)

**Table 2.2.1.10: Frequency of attendances in 2005-06, as stated by respondents**

Activity	Once	Twice	3 times	4 times	5 times	6-10 x	11-20 x	21+	Total
<b>Thousand persons</b>									
Classical music concerts	634	358	181	95	56	119	54	10	1,508
Popular music concerts	1,400	1,052	529	309	195	339	132	82	4,036
Musicals and operas	1,428	648	257	116	66	80	14	6	2,614
Theatre performances	1,269	730	267	144	81	171	47	15	2,723
Dance performances	884	401	122	79	40	57	25	18	1,625
Other performing arts	1,693	524	183	73	47	94	29	13	2,655
Cinemas	994	1,509	1,267	1,023	864	2,419	1,637	719	10,431
<b>Implied number of attendances</b>	<b>1</b>	<b>2</b>	<b>3</b>	<b>4</b>	<b>5</b>	<b>8</b>	<b>14</b>	<b>25</b>	<b>Total</b>
Classical music concerts	634	715	544	382	280	955	762	243	4,514
Popular music concerts	1,400	2,103	1,586	1,234	977	2,708	1,847	2,048	13,902
Musicals and operas	1,428	1,295	770	462	328	642	202	150	5,276
Theatre performances	1,269	1,460	801	575	404	1,370	651	368	6,897
Dance performances	884	803	365	314	202	458	343	448	3,815
Other performing arts	1,693	1,048	549	293	233	750	403	315	5,284
Cinemas	994	3,019	3,800	4,093	4,321	19,353	22,912	17,965	76,456

Source: See Table 2.2.1.1

**Table 2.2.1.11: Comparison with ticketing statistics**

<i>Sorted according to discrepancy</i>	ABS estimate for 2005-06	Average frequency in 2005-06	Compare LPA 2005 survey	ABS multiple of LPA 2005 survey
	'000 attending		'000 attending	
Dance performances	3,815	2.3	931	4.10
Classical music concerts	4,514	3.0	1,154	3.91
Popular music concerts	13,902	3.4	3,924	3.54
Theatre performances	6,897	2.5	2,118	3.26
Musicals and operas	5,276	2.0	2,992	1.76

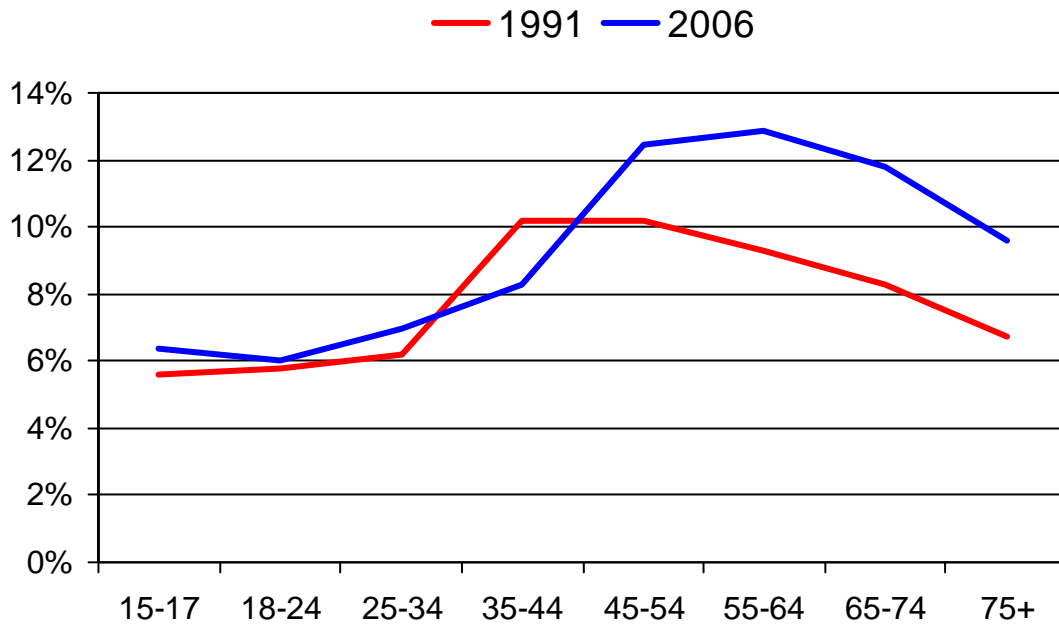
Source: ABS Cat 4110.0 and Live Performance Australia (LPA), *Ticket Attendance and Revenue Survey: Live entertainment industry in Australia, 2005*  
([http://www.liveperformance.com.au/default.aspx?s=ticketing\\_survey](http://www.liveperformance.com.au/default.aspx?s=ticketing_survey)).

**Table 2.2.1.12: Total attendance and revenue, ticketing surveys 2004 and 2005**

<i>Performance Category</i>	Paid tickets ('000)		Gross revenue (\$m)		Average per ticket (\$)	
	2004	2005	2004	2005	2004	2005
Classical music	969.1	1,027.2	41.9	54.4	\$ 43.21	\$ 52.95
Non-classical music	2,530.1	3,445.0	195.1	287.2	\$ 77.09	\$ 83.37
Opera	574.6	491.5	62.6	46.4	\$ 108.88	\$ 94.38
Musical theatre	1,817.1	2,342.2	138.7	178.0	\$ 76.34	\$ 76.01
Theatre	2,038.2	1,945.3	89.4	74.0	\$ 43.87	\$ 38.04
Ballet and dance	612.4	844.6	30.7	44.6	\$ 50.07	\$ 52.76
<b>Subtotal</b>	<b>8,541.3</b>	<b>10,095.9</b>	<b>558.3</b>	<b>684.6</b>	<b>\$ 65.36</b>	<b>\$ 67.81</b>
Children's/Family	505.2	1,213.5	10.7	43.1	\$ 21.25	\$ 35.52
Multi-category festivals	460.0	132.1	14.8	5.2	\$ 32.26	\$ 39.14
Single-category festivals	164.8	192.4	9.0	12.1	\$ 54.69	\$ 63.05
Special events/Other	2,837.0	2,128.5	96.7	89.4	\$ 34.09	\$ 41.98
<b>Total</b>	<b>12,508.5</b>	<b>13,762.4</b>	<b>689.6</b>	<b>834.3</b>	<b>\$ 55.13</b>	<b>\$ 60.62</b>

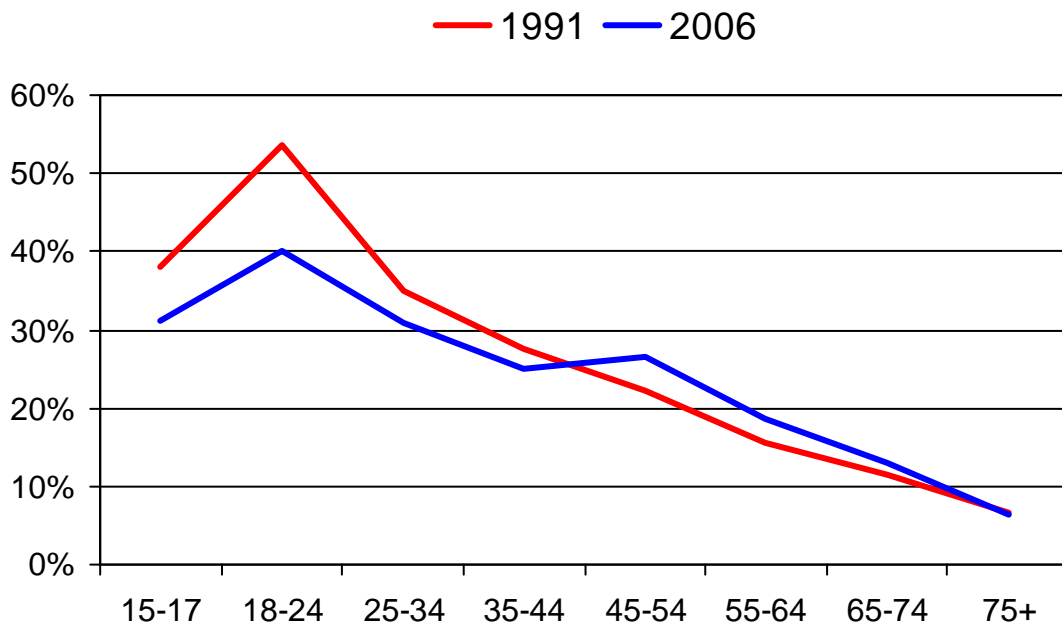
Source: Live Performance Australia (see previous table).

**Chart 2.2.1.1: Attendance rates for classical music performances, by age**



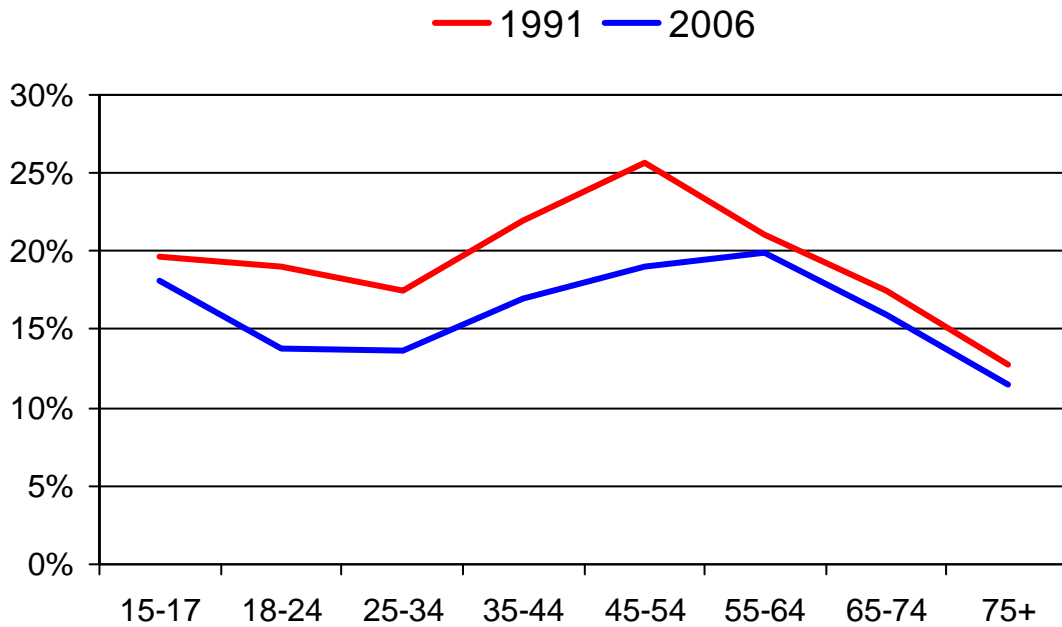
Source: ABS, Attendance at selected cultural venues and events (Cat 4113.0)

**Chart 2.2.1.2: Attendance rates for popular music performances, by age**



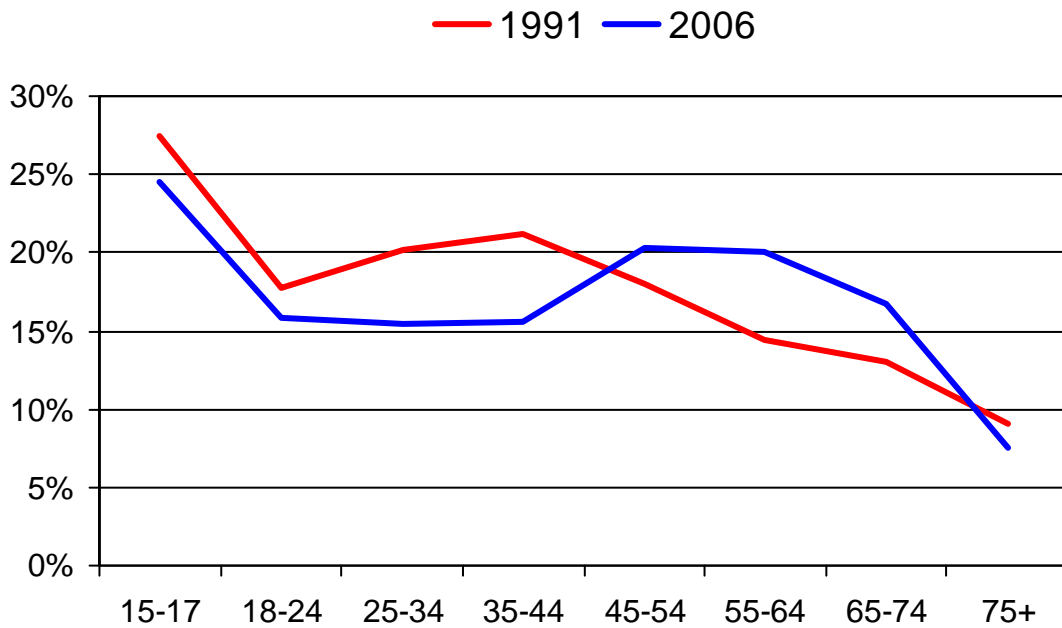
Source: ABS, Attendance at selected cultural venues and events (Cat 4113.0)

**Chart 2.2.1.3: Attendance rates for musicals and operas, by age**



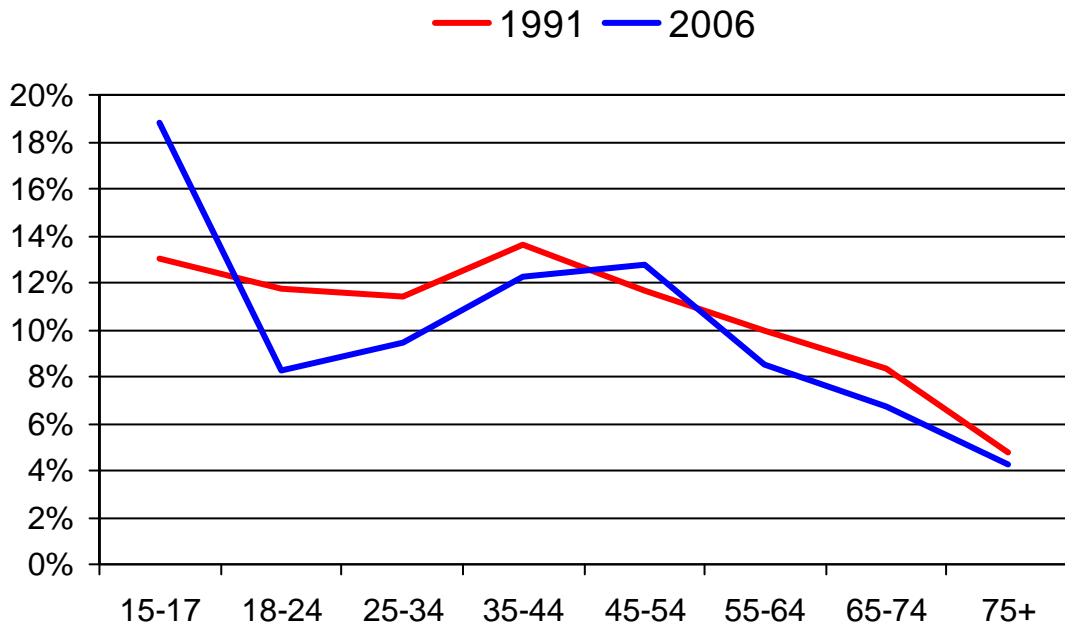
Source: ABS, Attendance at selected cultural venues and events (Cat 4113.0)

**Chart 2.2.1.4: Attendance rates for theatre performances, by age**



Source: ABS, Attendance at selected cultural venues and events (Cat 4113.0)

**Chart 2.2.1.5: Attendance rates for dance performances, by age**



Source: ABS, Attendance at selected cultural venues and events (Cat 4113.0)